

I-264 Upgraded Pavement Markings							
Item No: 5-938.00		Federal No: HSIP 2641(184)		State No: FD52 056 0264 012-023			
ITEM	DESCRIPTION	SUPPLEMENTAL DESCRIPTION	UNIT	I-264 EASTBOUND	I-264 WESTBOUND	I-64 & I-71	PROJECT TOTALS
2569	DEMOBILIZATION		LS				1
2650	MAINTAIN & CONTROL TRAFFIC		LS				1
2671	PORTABLE CHANGEABLE MESSAGE SIGN		EACH				2
6556	PAVE STRIPING-DUR TY 1-6 IN W		LF	860	982	270	2112
6598	PAVEMENT MARKING REMOVAL		SQFT	1206	599		1805
6600	REMOVE PAVEMENT MARKER TYPE V	LENS ONLY	EACH	296	295	48	639
20411ED	LAW ENFORCEMENT OFFICER		HOURL				250
22664EN	WATER BLASTING EXISTING STRIPE		LF	6615	4685	2000	13300
22692NS714	PAVEMENT MARKING-THERMO LETTERS	ASPHALT PAVEMENT	EACH	29			29
22692NS714	PAVEMENT MARKING-THERMO LETTERS	CONCRETE PAVEMENT	EACH	18	24		42
22854EN	PAVE STRIPE PERM-6 IN HD21-WHITE		LF	8470	4950	1650	15070
22855EN	PAVE STRIPE PERM-6 IN HD21-YELLOW		LF	1050			1050
22856EN	PAVE STRIPE PERM-12 IN HD21-WHITE		LF	13100	12250	360	25710
23886EC	LINEAR DELINEATION PANELS-6 IN W		LF	0	0	110	110
23890EC	LINEAR DELINEATION PANELS-1.5 IN W		LF	0	0	1100	1100
24489EC	INLAID PAVEMENT MARKER	WHITE/RED	EACH	770	662	26	1458
24489EC	INLAID PAVEMENT MARKER	YELLOW/RED	EACH	14	0	0	14
24899EC	PAVE MARKING-THERMO ELONG ROUTE SHIELD	ASPHALT PAVEMENT	EACH	9	10	0	19
24899EC	PAVE MARKING-THERMO ELONG ROUTE SHIELD	CONCRETE PAVEMENT	EACH	9	12	0	21
25067EC	PAVE STRIPING-THERMO POLYMER MOD-6 IN W	ASPHALT	LF	44	109	250	403
6572	PAVE MARKING-DOTTED LANE EXTEN	THERMO POLYMER MOD-12 IN W ASPHALT	LF	225	0	350	575
26125EC	PAVE MARKING-THERMO POLYMER MOD W	6-INCH CROSSWALK (ASPHALT)	SQFT	125	155	0	280
26125EC	PAVE MARKING-THERMO POLYMER MOD W	6-INCH CROSSWALK (CONCRETE)	SQFT	585	450	0	1035
26125EC	PAVE MARKING-THERMO POLYMER MOD W	24-INCH CROSSWALK (ASPHALT)	SQFT	120	120	0	240
26125EC	PAVE MARKING-THERMO POLYMER MOD W	24-INCH CROSSWALK (CONCRETE)	SQFT	440	860	0	1300
26125EC	PAVE MARKING-THERMO POLYMER MOD W	24-INCH STOP BAR (ASPHALT)	SQFT	112	120	0	232
26125EC	PAVE MARKING-THERMO POLYMER MOD W	24-INCH STOP BAR (CONCRETE)	SQFT	314	161	0	475
26125EC	PAVE MARKING-THERMO POLYMER MOD W	CURVE ARROW (ASPHALT)	SQFT	192	352	0	544
26125EC	PAVE MARKING-THERMO POLYMER MOD W	CURVE ARROW (CONCRETE)	SQFT	1056	448	0	1504
26125EC	PAVE MARKING-THERMO POLYMER MOD W	COMBO ARROW (ASPHALT)	SQFT	108	0	0	108
26125EC	PAVE MARKING-THERMO POLYMER MOD W	36-INCH YIELD BAR (ASPHALT)	SQFT	42	40	0	82
26125EC	PAVE MARKING-THERMO POLYMER MOD W	36-INCH YIELD BAR (CONCRETE)	SQFT	33	72	0	105
26125EC	PAVE MARKING-THERMO POLYMER MOD W	CHEVRONS & CROSS HATCH - WET REFLECTIVE (ASPHALT)	SQFT	1400	1325	900	3625
26125EC	PAVE MARKING-THERMO POLYMER MOD W	CHEVRONS & CROSS HATCH - WET REFLECTIVE (CONCRETE)	SQFT	17745	15950	5630	39325
26125EC	PAVE MARKING-THERMO POLYMER MOD W	LANE REDUCTION ARROW - WET REFLECTIVE (ASPHALT)	SQFT	84	210	0	294
26125EC	PAVE MARKING-THERMO POLYMER MOD W	LANE REDUCTION ARROW - WET REFLECTIVE (CONCRETE)	SQFT	798	924	168	1890
26125EC	PAVE MARKING-THERMO POLYMER MOD W	LETTERS - WET REFLECTIVE (CONCRETE)	SQFT	0	38	0	38
26125EC	PAVE MARKING-THERMO POLYMER MOD W	LANE USE COMBO ARROW - WET REFLECTIVE (CONCRETE)	SQFT	120	0	0	120

*Accuracy of information is not guaranteed

I-264 Upgraded Pavement Markings																																											
ITEM	DESCRIPTION	SUPPLEMENTAL DESCRIPTION	UNIT	I-264 Eastbound Plan Sheets																																	EASTBOUND TOTALS						
				1	2	3	4	5	6	7	8	9	10	11	12	13	14	15	16	17	18	19	20	21	22	23	24	25	26	27	28	29	30	31	32	33		34	35	36	37		
6556	PAVE STRIPING-DUR TY 1-6 IN W		LF					120		80					125	75	75	125						75		125					60											860	
6598	PAVEMENT MARKING REMOVAL		SQFT				510			319																							177	200								1206	
6600	REMOVE PAVEMENT MARKER TYPE V	LENS ONLY	EACH	10	35	15	18		6		12	30	25		8		15		25	6	5	6	6		16		7	5	3	2		5	16	20									296
22664EN	WATER BLASTING EXISTING STRIPE		LF	850	725	725		50	825		225	450	300	30	110		300	15	450			50					150	800				35		525									6615
22692NS714	PAVEMENT MARKING-THERMO LETTERS	ASPHALT PAVEMENT	EACH																			50											7			7			15			29	
22692NS714	PAVEMENT MARKING-THERMO LETTERS	CONCRETE PAVEMENT	EACH																	10		8																				18	
22854EN	PAVE STRIPE PERM-6 IN HD21-WHITE		LF	1200	120		1100		1600	550	25		800					50									1400	200						1200		225							8470
22855EN	PAVE STRIPE PERM-6 IN HD21-YELLOW		LF																															1050								1050	
22856EN	PAVE STRIPE PERM-12 IN HD21-WHITE		LF		650	1100	1150				350	1500	1500		350		600		900	700	250		250		1000					300		50	1800				650					13100	
23886EC	LINEAR DELINEATION PANELS-6 IN W		LF																																							0	
23890EC	LINEAR DELINEATION PANELS-1.5 IN W		LF																																							0	
24489EC	INLAID PAVEMENT MARKER	WHITE/RED	EACH		55	60	52		18	15	26	100	80				45		52	20	35	80	12		24				6	8	22		46	14								770	
24489EC	INLAID PAVEMENT MARKER	YELLOW/RED	EACH																															14								14	
24899EC	PAVE MARKING-THERMO ELONG ROUTE SHIELD	ASPHALT PAVEMENT	EACH																														3			3			3			9	
24899EC	PAVE MARKING-THERMO ELONG ROUTE SHIELD	CONCRETE PAVEMENT	EACH		1												1		2	3		2																				9	
25067EC	PAVE STRIPING-THERMO POLYMER MOD-6 IN W	ASPHALT	LF																																24				20			44	
6572	PAVE MARKING-DOTTED LANE EXTEN	THERMO POLYMER MOD-12 IN W ASPHALT	LF																																			225				225	
26125EC	PAVE MARKING-THERMO POLYMER MOD W	6-INCH CROSSWALK (ASPHALT)	SQFT																															65	60							125	
26125EC	PAVE MARKING-THERMO POLYMER MOD W	6-INCH CROSSWALK (CONCRETE)	SQFT				160	150		75			120	20	60																												585
26125EC	PAVE MARKING-THERMO POLYMER MOD W	24-INCH CROSSWALK (ASPHALT)	SQFT																																120							120	
26125EC	PAVE MARKING-THERMO POLYMER MOD W	24-INCH CROSSWALK (CONCRETE)	SQFT					240						200																													440
26125EC	PAVE MARKING-THERMO POLYMER MOD W	24-INCH STOP BAR (ASPHALT)	SQFT																																112							112	
26125EC	PAVE MARKING-THERMO POLYMER MOD W	24-INCH STOP BAR (CONCRETE)	SQFT				110			100			104																														314
26125EC	PAVE MARKING-THERMO POLYMER MOD W	CURVE ARROW (ASPHALT)	SQFT																																192								192
26125EC	PAVE MARKING-THERMO POLYMER MOD W	CURVE ARROW (CONCRETE)	SQFT				448			192			320																96														1056
26125EC	PAVE MARKING-THERMO POLYMER MOD W	COMBO ARROW (ASPHALT)	SQFT																																108								108
26125EC	PAVE MARKING-THERMO POLYMER MOD W	36-INCH YIELD BAR (ASPHALT)	SQFT																																	24			18				42
26125EC	PAVE MARKING-THERMO POLYMER MOD W	36-INCH YIELD BAR (CONCRETE)	SQFT											15				18																									33
26125EC	PAVE MARKING-THERMO POLYMER MOD W	CHEVRONS & CROSS HATCH - WET REFLECTIVE (ASPHALT)	SQFT																															525				375			500		1400
26125EC	PAVE MARKING-THERMO POLYMER MOD W	CHEVRONS & CROSS HATCH - WET REFLECTIVE (CONCRETE)	SQFT	500	650		1125			950			1150			1050	850			2000			1100	1300		3400	150	220	400	200	300	2400											17745
26125EC	PAVE MARKING-THERMO POLYMER MOD W	LANE REDUCTION ARROW - WET REFLECTIVE (ASPHALT)	SQFT																																84								84
26125EC	PAVE MARKING-THERMO POLYMER MOD W	LANE REDUCTION ARROW - WET REFLECTIVE (CONCRETE)	SQFT	168				126			168					168											126	42															798
26125EC	PAVE MARKING-THERMO POLYMER MOD W	LETTERS - WET REFLECTIVE (CONCRETE)	SQFT																																								0
26125EC	PAVE MARKING-THERMO POLYMER MOD W	LANE USE COMBO ARROW - WET REFLECTIVE (CONCRETE)	SQFT																			120																					120

*Accuracy of information is not guaranteed

I-264 Upgraded Pavement Markings																																									
ITEM	DESCRIPTION	SUPPLEMENTAL DESCRIPTION	UNIT	I-264 Westbound Plan Sheets																																			WESTBOUND		
				38	39	40	41	42	43	44	45	46	47	48	49	50	51	52	53	54	55	56	57	58	59	60	61	62	63	64	65	66	67	68	69	70	71	72	73	74	TOTALS
6556	PAVE STRIPING-DUR TY 1-6 IN W		LF								60				60			75	100		80	110				12	160			140			75		110					982	
6598	PAVEMENT MARKING REMOVAL		SQFT					210	75									30							204							30					50	599			
6600	REMOVE PAVEMENT MARKER TYPE V	LENS ONLY	EACH				2	10	12	8	12	10	10	5	14		3	14		2			28	16	12	22	30			3			10			22	26	24		295	
22664EN	WATER BLASTING EXISTING STRIPE		LF				50		250	600		200		100			40	300		50			550	350	250	325	250	60		75			200		65	60	450	250	150	60	4685
22692NS714	PAVEMENT MARKING-THERMO LETTERS	ASPHALT PAVEMENT	EACH																																				0		
22692NS714	PAVEMENT MARKING-THERMO LETTERS	CONCRETE PAVEMENT	EACH											8																		2		2	12					24	
22854EN	PAVE STRIPE PERM-6 IN HD21-WHITE		LF		300	150	150	800		1200							400									1700							250							4950	
22855EN	PAVE STRIPE PERM-6 IN HD21-YELLOW		LF																																					0	
22856EN	PAVE STRIPE PERM-12 IN HD21-WHITE		LF	425	525			175	500		600	400	425	450	650			800					200	600	800	1550	100										650	1800	1600		12250
23886EC	LINEAR DELINEATION PANELS-6 IN W		LF																																					0	
23890EC	LINEAR DELINEATION PANELS-1.5 IN W		LF																																					0	
24489EC	INLAID PAVEMENT MARKER	WHITE/RED	EACH					25	40		14	32	12	18	16			30					16	48	52	70	40						18				54	92	85		662
24489EC	INLAID PAVEMENT MARKER	YELLOW/RED	EACH																																					0	
24899EC	PAVE MARKING-THERMO ELONG ROUTE SHIELD	ASPHALT PAVEMENT	EACH	2				4	3	1																														10	
24899EC	PAVE MARKING-THERMO ELONG ROUTE SHIELD	CONCRETE PAVEMENT	EACH										3		4																		1		1	3				12	
25067EC	PAVE STRIPING-THERMO POLYMER MOD-6 IN W	ASPHALT	LF					75	34																															109	
6572	PAVE MARKING-DOTTED LANE EXTEN	THERMO POLYMER MOD-12 IN W ASPHALT	LF																																					0	
26125EC	PAVE MARKING-THERMO POLYMER MOD W	6-INCH CROSSWALK (ASPHALT)	SQFT					90	65																															155	
26125EC	PAVE MARKING-THERMO POLYMER MOD W	6-INCH CROSSWALK (CONCRETE)	SQFT															30							100	60								100	110				50	450	
26125EC	PAVE MARKING-THERMO POLYMER MOD W	24-INCH CROSSWALK (ASPHALT)	SQFT						120																															120	
26125EC	PAVE MARKING-THERMO POLYMER MOD W	24-INCH CROSSWALK (CONCRETE)	SQFT																							160									200	300				200	860
26125EC	PAVE MARKING-THERMO POLYMER MOD W	24-INCH STOP BAR (ASPHALT)	SQFT					120																																120	
26125EC	PAVE MARKING-THERMO POLYMER MOD W	24-INCH STOP BAR (CONCRETE)	SQFT																							104									25				32	161	
26125EC	PAVE MARKING-THERMO POLYMER MOD W	CURVE ARROW (ASPHALT)	SQFT		64			288																																352	
26125EC	PAVE MARKING-THERMO POLYMER MOD W	CURVE ARROW (CONCRETE)	SQFT																							448														448	
26125EC	PAVE MARKING-THERMO POLYMER MOD W	COMBO ARROW (ASPHALT)	SQFT																																					0	
26125EC	PAVE MARKING-THERMO POLYMER MOD W	36-INCH YIELD BAR (ASPHALT)	SQFT						40																															40	
26125EC	PAVE MARKING-THERMO POLYMER MOD W	36-INCH YIELD BAR (CONCRETE)	SQFT																							15				18			24					15	72		
26125EC	PAVE MARKING-THERMO POLYMER MOD W	CHEVRONS & CROSS HATCH - WET REFLECTIVE (ASPHALT)	SQFT		325			1000																																1325	
26125EC	PAVE MARKING-THERMO POLYMER MOD W	CHEVRONS & CROSS HATCH - WET REFLECTIVE (CONCRETE)	SQFT								1300	475	350			1700	3000	300	1300		800	725				1000					1150			775				1075	2000		15950
26125EC	PAVE MARKING-THERMO POLYMER MOD W	LANE REDUCTION ARROW - WET REFLECTIVE (ASPHALT)	SQFT			126			84																															210	
26125EC	PAVE MARKING-THERMO POLYMER MOD W	LANE REDUCTION ARROW - WET REFLECTIVE (CONCRETE)	SQFT													42	126					168				126	84	126		84					42	126				924	
26125EC	PAVE MARKING-THERMO POLYMER MOD W	LETTERS - WET REFLECTIVE (CONCRETE)	SQFT										38																											38	
26125EC	PAVE MARKING-THERMO POLYMER MOD W	LANE USE COMBO ARROW - WET REFLECTIVE (CONCRETE)	SQFT																																					0	

*Accuracy of information is not guaranteed

I-264 Upgraded Pavement Markings														
ITEM	DESCRIPTION	SUPPLEMENTAL DESCRIPTION	UNIT	I-64 and I-71 Plan Sheets										I-64/I-71
				75	76	77	78	79	80	81	82	83	84	TOTALS
6556	PAVE STRIPING-DUR TY 1-6 IN W		LF	50						220				270
6598	PAVEMENT MARKING REMOVAL		SQFT											0
6600	REMOVE PAVEMENT MARKER TYPE V	LENS ONLY	EACH			6	25		5	12				48
22664EN	WATER BLASTING EXISTING STRIPE		LF				700		200	1000			100	2000
22692NS714	PAVEMENT MARKING-THERMO LETTERS	ASPHALT PAVEMENT	EACH											0
22692NS714	PAVEMENT MARKING-THERMO LETTERS	CONCRETE PAVEMENT	EACH											0
22854EN	PAVE STRIPE PERM-6 IN HD21-WHITE		LF						250	1400				1650
22855EN	PAVE STRIPE PERM-6 IN HD21-YELLOW		LF											0
22856EN	PAVE STRIPE PERM-12 IN HD21-WHITE		LF			300			60					360
23886EC	LINEAR DELINEATION PANELS-6 IN W		LF									110		110
23890EC	LINEAR DELINEATION PANELS-1.5 IN W		LF									1100		1100
24489EC	INLAID PAVEMENT MARKER	WHITE/RED	EACH			22	4							26
24489EC	INLAID PAVEMENT MARKER	YELLOW/RED	EACH											0
24899EC	PAVE MARKING-THERMO ELONG ROUTE SHIELD	ASPHALT PAVEMENT	EACH											0
24899EC	PAVE MARKING-THERMO ELONG ROUTE SHIELD	CONCRETE PAVEMENT	EACH											0
25067EC	PAVE STRIPING-THERMO POLYMER MOD-6 IN W	ASPHALT	LF										250	250
6572	PAVE MARKING-DOTTED LANE EXTEN	THERMO POLYMER MOD-12 IN W ASPHALT	LF								350			350
26125EC	PAVE MARKING-THERMO POLYMER MOD W	6-INCH CROSSWALK (ASPHALT)	SQFT											0
26125EC	PAVE MARKING-THERMO POLYMER MOD W	6-INCH CROSSWALK (CONCRETE)	SQFT											0
26125EC	PAVE MARKING-THERMO POLYMER MOD W	24-INCH CROSSWALK (ASPHALT)	SQFT											0
26125EC	PAVE MARKING-THERMO POLYMER MOD W	24-INCH CROSSWALK (CONCRETE)	SQFT											0
26125EC	PAVE MARKING-THERMO POLYMER MOD W	24-INCH STOP BAR (ASPHALT)	SQFT											0
26125EC	PAVE MARKING-THERMO POLYMER MOD W	24-INCH STOP BAR (CONCRETE)	SQFT											0
26125EC	PAVE MARKING-THERMO POLYMER MOD W	CURVE ARROW (ASPHALT)	SQFT											0
26125EC	PAVE MARKING-THERMO POLYMER MOD W	CURVE ARROW (CONCRETE)	SQFT											0
26125EC	PAVE MARKING-THERMO POLYMER MOD W	COMBO ARROW (ASPHALT)	SQFT											0
26125EC	PAVE MARKING-THERMO POLYMER MOD W	36-INCH YIELD BAR (ASPHALT)	SQFT											0
26125EC	PAVE MARKING-THERMO POLYMER MOD W	36-INCH YIELD BAR (CONCRETE)	SQFT											0
26125EC	PAVE MARKING-THERMO POLYMER MOD W	CHEVRONS & CROSS HATCH - WET REFLECTIVE (ASPHALT)	SQFT								450		450	900
26125EC	PAVE MARKING-THERMO POLYMER MOD W	CHEVRONS & CROSS HATCH - WET REFLECTIVE (CONCRETE)	SQFT	980	850	100	2300	1400						5630
26125EC	PAVE MARKING-THERMO POLYMER MOD W	LANE REDUCTION ARROW - WET REFLECTIVE (ASPHALT)	SQFT											0
26125EC	PAVE MARKING-THERMO POLYMER MOD W	LANE REDUCTION ARROW - WET REFLECTIVE (CONCRETE)	SQFT				168							168
26125EC	PAVE MARKING-THERMO POLYMER MOD W	LETTERS - WET REFLECTIVE (CONCRETE)	SQFT											0
26125EC	PAVE MARKING-THERMO POLYMER MOD W	LANE USE COMBO ARROW - WET REFLECTIVE (CONCRETE)	SQFT											0

*Accuracy of information is not guaranteed

NOTE: Work shown on this sheet falls within the limits of an active concrete rehabilitation project. These work items will need to be coordinated with the rehab project and could be delayed or omitted from the contract.

COUNTY OF	ITEM NO.	SHEET NO.
JEFFERSON	5-938.00	1

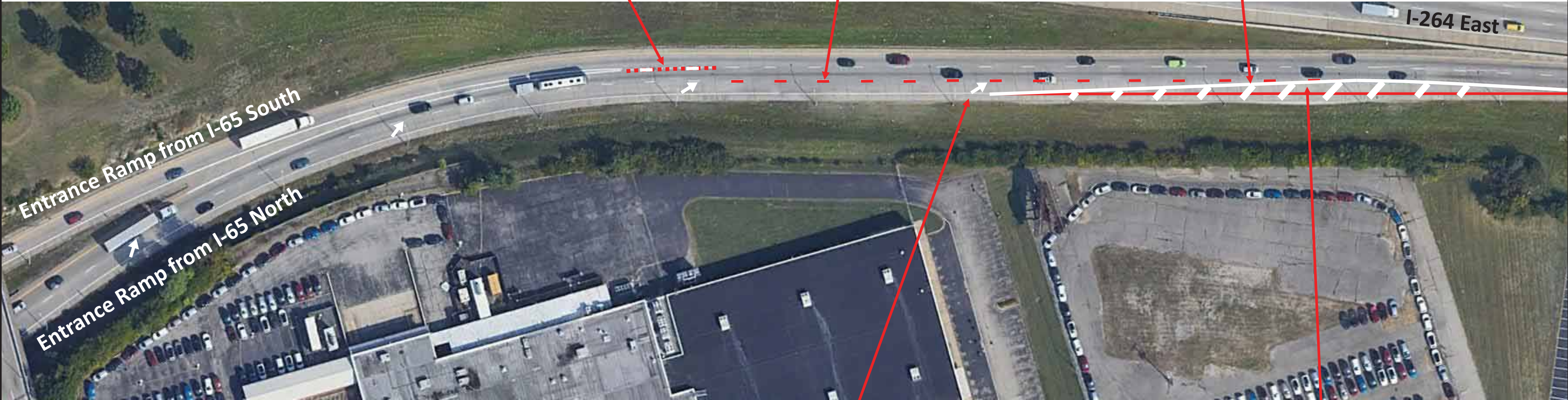
- Remove existing 12-inch dotted lane line.
- Extend existing 6-inch white skip line to the end of the existing gore.
- Remove existing Type V pavement marker lenses that do not conform to the new striping pattern. Do Not Disturb & leave castings in place.

- Remove existing 6-inch skip line beyond the third lane reduction arrow.
- Remove all existing Type V pavement marker lenses beyond the third lane reduction arrow. Do Not Disturb & leave castings in place.

Install 48-inch white, wet reflective, HPS-8 shoulder cross hatching on 40' spacing thru the lane ending taper along wide shoulder.



MATCHLINE
(SEE SHEET 2)



PAVEMENT MARKING QUANTITIES		
DESCRIPTION	UNIT	QUANTITY
REMOVE PAVEMENT MARKER TYPE V LENS	EACH	10
WATER BLASTING EXISTING STRIPE	LF	850
PAVE STRIPE PERM-6 IN HD21-WHITE	LF	1200
PAVE MARKING-THERMO POLYMER MOD W CROSS HATCH - WET REFLECTIVE (CONCRETE)	SQFT	500
PAVE MARKING-THERMO POLYMER MOD W LANE REDUCTION ARROW - WET REFLECTIVE (CONCRETE)	SQFT	168

Install 4, wet reflective, HPS-8 lane reduction arrows on approximate 275' spacing. Install the last arrow at the start of lane ending taper. If possible, avoid pavement joints with minor spacing adjustments.

- Install new minimum 330', 6-inch solid white painted edge line taper. Verify new alignment with KYTC prior to striping. Install two coats of paint for all new stripes.
- Remove existing white edge line & existing skip line within limits of proposed edge line taper. Verify removal limits with KYTC prior to beginning work.
- Remove all existing Type V pavement marker lenses beyond the third lane reduction arrow. Do Not Disturb & leave castings in place.

NO SCALE

I-264 PAVEMENT MARKINGS
I-65 Ramps to I-264 East
MP 12.4

NOTE: Work shown on this sheet falls within the limits of an active concrete rehabilitation project. These work items will need to be coordinated with the rehab project and could be delayed or omitted from the contract.

COUNTY OF	ITEM NO.	SHEET NO.
JEFFERSON	5-938.00	2

MATCHLINE
(SEE SHEET 1)

Install 48-inch white, wet reflective, HPS-8 gore chevrons on 40' spacing.

- Shorten existing 12-inch white gore stripes by approximately 210' & 150'.
- Extend existing 6-inch white skip line west to the end of the modified gore.
- Remove existing Type V lenses that do not conform to the new striping pattern. Do Not Disturb & leave castings in place.
- Utilize existing makers when possible.

PAVEMENT MARKING QUANTITIES		
DESCRIPTION	UNIT	QUANTITY
REMOVE PAVEMENT MARKER TYPE V LENS	EACH	35
WATER BLASTING EXISTING STRIPE	LF	725
PAVE STRIPE PERM-6 IN HD21-WHITE	LF	120
PAVE STRIPE PERM-12 IN HD21-WHITE	LF	650
INLAID PAVEMENT MARKER W/R	EACH	55
PAVE MARKING-THERMO ELONG ROUTE SHIELD (CONCRETE)	EACH	1
PAVE MARKING-THERMO POLYMER MOD W CHEVRONS - WET REFLECTIVE (CONCRETE)	SQFT	650



MATCHLINE
(SEE SHEET 3)



Entrance Ramp from I-65

I-264 East

- Remove existing 6-inch white skip line starting 225' in advance of the end of the modified gore from I-65, heading east to KY 864.
- Install new painted 12-inch white dotted exit only stripe (3' skip, 9' gap). Install two coats of paint for all new stripes.
- Install new bi-directional white/red inlaid pavement markers along the dotted lane line (24' spacing). Utilize existing markers when possible.
- Remove any existing Type V lenses that do not conform to the new striping pattern. Do Not Disturb & leave castings in place.

Install one KY 864 thermo elongated route shield in the exit only lane approximately 300' east of the cantilever panel sign. Adjust location as necessary to avoid damaged pavement and joints.

NO SCALE

I-264 PAVEMENT MARKINGS
Eastbound Entrance Ramp from I-65
MP 12.7

NOTE: Work shown on this sheet falls within the limits of an active concrete rehabilitation project. These work items will need to be coordinated with the rehab project and could be delayed or omitted from the contract.

COUNTY OF	ITEM NO.	SHEET NO.
JEFFERSON	5-938.00	3

PAVEMENT MARKING QUANTITIES		
DESCRIPTION	UNIT	QUANTITY
REMOVE PAVEMENT MARKER TYPE V LENS	EACH	15
WATER BLASTING EXISTING STRIPE	LF	725
PAVE STRIPE PERM-12 IN HD21-WHITE	LF	1100
INLAID PAVEMENT MARKER W/R	EACH	60



MATCHLINE
(SEE SHEET 2)

MATCHLINE
(SEE SHEET 4)



- Remove existing 6-inch white skip line continuing from I-65 to the exit ramp to KY 864.
- Install new painted 12-inch white dotted exit only stripe (3' skip, 9' gap). Install two coats of paint for all new stripes.
- Install new bi-directional white/red inlaid pavement markers along the dotted lane line (24' spacing). Utilize existing markers when possible. Do Not Install markers on bridge decks.
- Remove any existing Type V lenses that do not conform to the new striping pattern. Do Not Disturb & leave castings in place.

- Remove existing Type V pavement marker lenses that are in line with the existing solid 12-inch white stripe. Do Not Disturb & leave castings in place.
- Refresh the existing 12-inch solid white exit only stripe. Stripe over the old castings.
- Install new bi-directional white/red inlaid pavement markers along the 12-inch solid white stripe. Do Not Install markers on bridge decks.

NO SCALE

I-264 PAVEMENT MARKINGS
Eastbound between I-65 & KY 864
MP 12.9



MATCHLINE
(SEE SHEET 3)

Install 48-inch white, wet reflective, HPS-8 gore chevrons on 40' spacing.

Remove existing curve arrows and install approximately 7 sets of HPS-8 curve arrows, starting 40' back from the stop bar, then on equal, max 80' spacing to the start of the solid white stripes.

Remove existing markings & install 6-inch white HPS-8 crosswalk stripes & 24-inch white HPS-8 stop bars. Crosswalks to be 10' wide. Remove any striping within the limits of the crosswalks.



- Remove existing Type V pavement marker lenses that are in line with the existing solid 12-inch white stripe. Do Not Disturb & leave castings in place.
- Refresh the existing 12-inch solid white exit only stripe. Stripe over the old castings.
- Install new bi-directional white/red inlaid pavement markers along the 12-inch solid white stripe.

PAVEMENT MARKING QUANTITIES		
DESCRIPTION	UNIT	QUANTITY
PAVEMENT MARKING REMOVAL	SQFT	510
REMOVE PAVEMENT MARKER TYPE V LENS	EACH	18
PAVE STRIPE PERM-6 IN HD21-WHITE	LF	1100
PAVE STRIPE PERM-12 IN HD21-WHITE	LF	1150
INLAID PAVEMENT MARKER W/R	EACH	52
PAVE MARKING-THERMO POLYMER MOD W 6-INCH CROSSWALK (CONCRETE)	SQFT	160
PAVE MARKING-THERMO POLYMER MOD W 24-INCH STOP BAR (CONCRETE)	SQFT	110
PAVE MARKING-THERMO POLYMER MOD W CURVE ARROW (CONCRETE)	SQFT	448
PAVE MARKING-THERMO POLYMER MOD W CHEVRONS - WET REFLECTIVE (CONCRETE)	SQFT	1125

- Remove existing Type V pavement marker lenses that are in line with the existing solid white stripes. Do Not Disturb & leave castings in place.
- Refresh the existing 6-inch solid white left & right turn lane lines. Stripe over the old castings.
- Install/refresh 12-inch center, solid white gore stripe(s). Stripe over the old castings.
- Install new bi-directional white/red inlaid pavement markers along both 6-inch & 12-inch solid white stripes.

NO SCALE

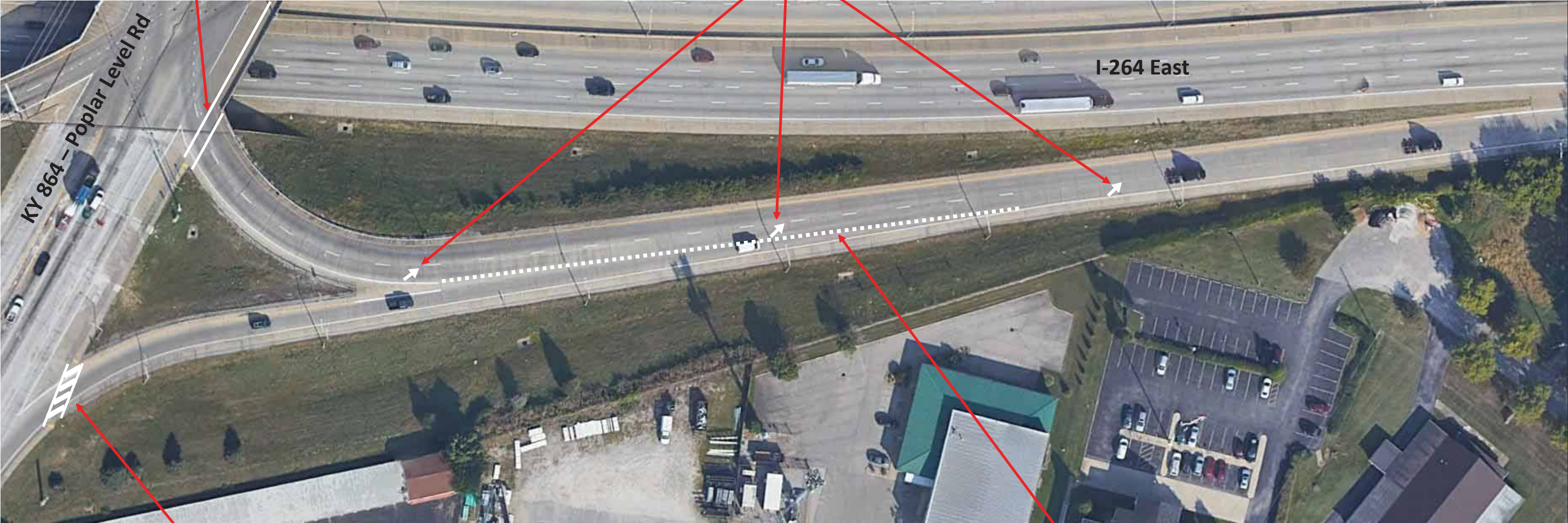
I-264 PAVEMENT MARKINGS
Eastbound Exit Ramp to KY 864
MP 13.2



MATCHLINE
(SEE SHEET 6)

Install 6-inch white HPS-8 crosswalk stripes.
Crosswalks to be 10' wide. Remove any edge
lines within the limits of the crosswalks.

Install 3, wet reflective, HPS-8 lane reduction arrows on approximate 275'
spacing. Install the first arrow approximately 30' in advance of the end of the
NB/SB gore. If possible, avoid pavement joints with minor spacing adjustments.



Install 6-inch white HPS-8 crosswalk stripes and 24-inch
white HPS-8 bars with 24-inch gaps. Install bars parallel
with the flow of traffic. Crosswalks to be 10' wide. Remove
any edge lines within the limits of the crosswalks.

PAVEMENT MARKING QUANTITIES		
DESCRIPTION	UNIT	QUANTITY
PAVE STRIPING-DUR TY 1-6 IN W	LF	120
WATER BLASTING EXISTING STRIPE	LF	50
PAVE MARKING-THERMO POLYMER MOD W 6-INCH CROSSWALK (CONCRETE)	SQFT	150
PAVE MARKING-THERMO POLYMER MOD W 24-INCH CROSSWALK (CONCRETE)	SQFT	240
PAVE MARKING-THERMO POLYMER MOD W LANE REDUCTION ARROW - WET REFLECTIVE (CONCRETE)	SQFT	126

Install dotted 6-inch white Type 1 tape
across the entrance ramp taper from
Northbound Poplar Level Rd (3' skip, 9' gap).

NO SCALE

I-264 PAVEMENT MARKINGS
Eastbound Entrance Ramp from KY 864
MP 13.5

MATCHLINE
(SEE SHEET 5)

- Install approximately 400' of 6-inch dotted white paint starting at the end of the gore (3' skip, 9' gap). Install two coats of paint for all new stripes.
- Remove existing 6-inch white skip line beyond gore.
- Install new bi-directional white/red inlaid pavement markers along dotted lane line (24' spacing). Utilize existing markers when possible.
- Remove any existing Type V lenses that do not conform to the new striping pattern. Do Not Disturb & leave castings in place.

- Install new 6-inch solid white painted edge line taper. Edge line to uniformly taper through the curve over approximately 660'. Verify new alignment with KYTC prior to striping. Install two coats of paint for all new stripes.
- Remove existing white edge line within limits of proposed edge line taper. Verify removal limits with KYTC prior to beginning work.



PAVEMENT MARKING QUANTITIES		
DESCRIPTION	UNIT	QUANTITY
REMOVE PAVEMENT MARKER TYPE V LENS	EACH	6
WATER BLASTING EXISTING STRIPE	LF	825
PAVE STRIPE PERM-6 IN HD21-WHITE	LF	1600
INLAID PAVEMENT MARKER W/R	EACH	18

NO SCALE



Install dotted 6-inch white Type 1 tape across exit ramp taper (3' skip, 9' gap)

Install 48-inch white, wet reflective, HPS-8 gore chevrons on 40' spacing.

Remove existing markings & install 6-inch white HPS-8 crosswalk stripes & 24-inch white HPS-8 stop bars. Crosswalks to be 10' wide. Remove any striping within the limits of the crosswalks.



PAVEMENT MARKING QUANTITIES			
DESCRIPTION	UNIT	QUANTITY	
PAVE STRIPING-DUR TY 1-6 IN W	LF	80	
PAVEMENT MARKING REMOVAL	SQFT	319	
PAVE STRIPE PERM-6 IN HD21-WHITE	LF	550	
INLAID PAVEMENT MARKER W/R	EACH	15	
PAVE MARKING-THERMO POLYMER MOD W 6-INCH CROSSWALK (CONCRETE)	SQFT	75	
PAVE MARKING-THERMO POLYMER MOD W 24-INCH STOP BAR (CONCRETE)	SQFT	100	
PAVE MARKING-THERMO POLYMER MOD W CURVE ARROW (CONCRETE)	SQFT	192	
PAVE MARKING-THERMO POLYMER MOD W CHEVRONS - WET REFLECTIVE (CONCRETE)	SQFT	950	

- Extend existing 6-inch solid white painted turn lane lines. Extend such that all lanes are a minimum of 12' wide. Verify location with KYTC prior to striping. Install two coats of paint for all new stripes.
- Install new bi-directional white/red inlaid pavement markers along solid white stripes.
- Remove all existing curve arrows and install new HPS-8 curve arrows starting 40' back from the stop bar, then on equal, max 80' spacing to the start of the solid white turn lane lines.

NO SCALE

I-264 PAVEMENT MARKINGS
Eastbound Exit Ramp to KY 1703
MP 14.3

PAVEMENT MARKING QUANTITIES		
DESCRIPTION	UNIT	QUANTITY
REMOVE PAVEMENT MARKER TYPE V LENS	EACH	12
WATER BLASTING EXISTING STRIPE	LF	225
PAVE STRIPE PERM-6 IN HD21-WHITE	LF	25
PAVE STRIPE PERM-12 IN HD21-WHITE	LF	350
INLAID PAVEMENT MARKER W/R	EACH	26
PAVE MARKING-THERMO POLYMER MOD W LANE REDUCTION ARROW - WET REFLECTIVE (CONCRETE)	SQFT	168

- Remove existing 6-inch white skip line starting at the end of the entrance ramp gore from KY 1703, heading east to US 31E.
- Install new painted 12-inch white dotted exit only stripe (3' skip, 9' gap). Install two coats of paint for all new stripes.
- Install new bi-directional white/red inlaid pavement markers along the dotted lane line (24' spacing). Utilize existing markers when possible.
- Remove any existing Type V lenses that do not conform to the new striping pattern. Do Not Disturb & leave castings in place.



MATCHLINE
(SEE SHEET 9)

- Remove existing 6-inch skip line beyond the third lane reduction arrow (approximately 5 skips).
- Remove all existing Type V lenses beyond the third lane reduction arrow. Do Not Disturb & leave castings in place.



Entrance Ramp
from Newburg Rd

I-264 East

Extend 6-inch white painted skip line west, 1 skip, to the entrance ramp gore from KY 1703. Install two coats of paint for all new stripes.

Install 4, wet reflective, HPS-8 lane reduction arrows on approximate 300' spacing. Install the last (eastern most) arrow at the start of the lane ending taper (approximately the location of the existing lane ends, merge left symbol sign). If possible, avoid pavement joints with minor spacing adjustments.

NO SCALE

I-264 PAVEMENT MARKINGS
Eastbound Entrance Ramp from KY 1703
MP 14.8

MATCHLINE
(SEE SHEET 8)

PAVEMENT MARKING QUANTITIES		
DESCRIPTION	UNIT	QUANTITY
REMOVE PAVEMENT MARKER TYPE V LENS	EACH	30
WATER BLASTING EXISTING STRIPE	LF	450
PAVE STRIPE PERM-12 IN HD21-WHITE	LF	1500
INLAID PAVEMENT MARKER W/R	EACH	100



MATCHLINE
(SEE SHEET 10)



- Remove existing 6-inch white skip line continuing from the entrance ramp gore from KY 1703, heading east to US 31E.
- Install new painted 12-inch white dotted exit only stripe (3’ skip, 9’ gap). Install two coats of paint for all new stripes.
- Install new bi-directional white/red inlaid pavement markers along the dotted lane line (24’ spacing). Utilize existing markers when possible. Do Not Install pavement markers on bridges.
- Remove any existing Type V lenses that do not conform to the new striping pattern. Do Not Disturb & leave castings in place.

- Remove existing Type V pavement marker lenses that are in line with the existing 12-inch solid white exit only stripe. Do Not Disturb & leave castings in place.
- Install/refresh 12-inch solid exit only white stripe, starting 600’ in advance of Bardstown Rd exit taper (approximately 80’ in advance of start of existing solid). Stripe over the old castings. Install two coats of paint for all new stripes.
- Install new bi-directional white/red inlaid pavement markers along the 12-inch solid white.

NO SCALE

MATCHLINE
(SEE SHEET 9)

- Re-align 12-inch solid white exit only stripe to better parallel edge line, maintaining 12'-13' driving lane. Verify new alignment with KYTC prior to striping.
- Remove segment of the existing stripe that doesn't conform to the new alignment.

Install 48-inch white, wet reflective, HPS-8 gore chevrons on 40' spacing.

Install 5 sets of HPS-8 curve arrows. Begin 40' back of the left turn stop bar, then on equal, max 80' spacing to the start of the solid white stripes. After the gore split, install right curve arrows on 80' spacing.

Remove existing markings & install 24-inch white HPS-8 stop bars and 6-inch white HPS-8 crosswalk stripes. Crosswalks to be 10' wide and stop bars a minimum of 6' in advance of the crosswalks. Remove any edge lines within the limits of the crosswalks.



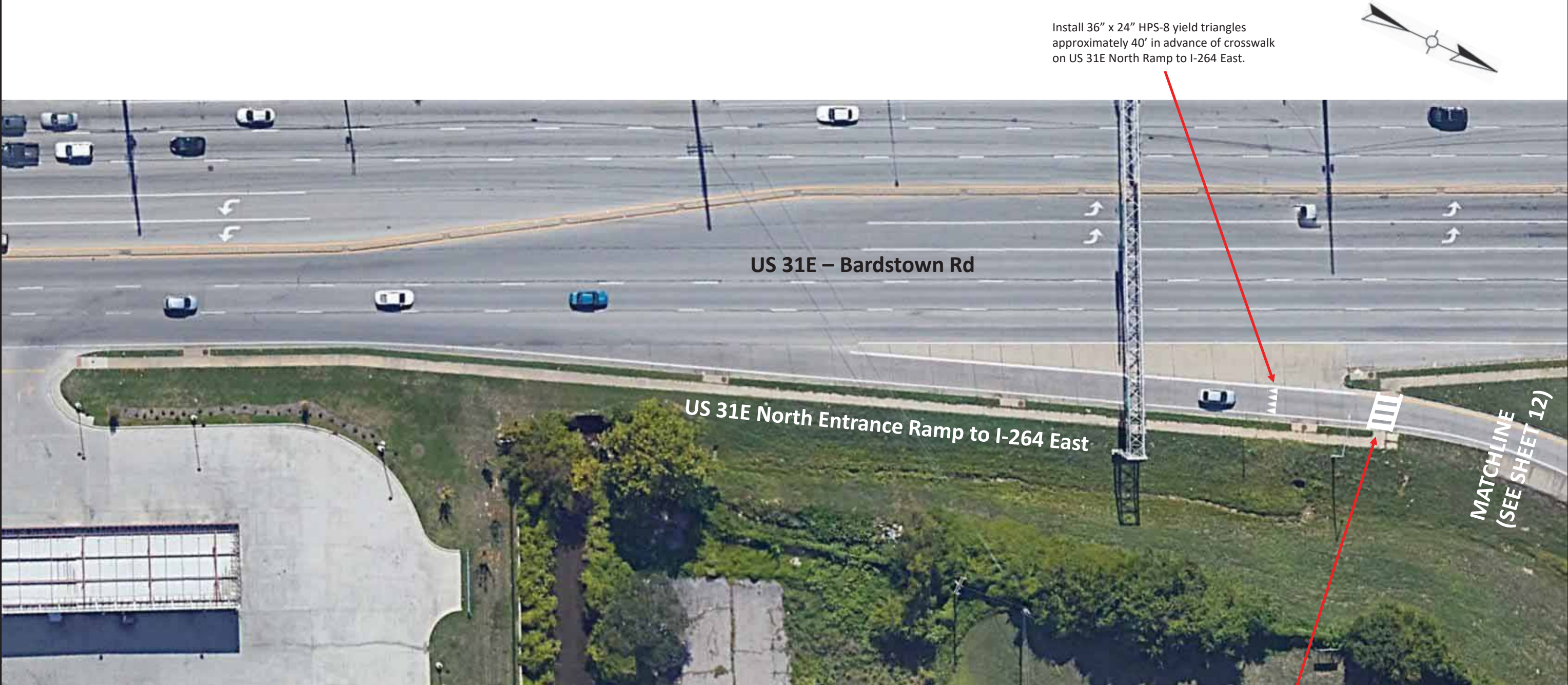
- Remove existing Type V pavement marker lenses that are in line with the existing 12-inch solid white exit only stripe. Do Not Disturb & leave castings in place.
- Install/refresh 12-inch solid exit only white stripe. Stripe over the old castings. Install two coats of paint for all new stripes.
- Install new bi-directional white/red inlaid pavement markers along the 12-inch solid white.

PAVEMENT MARKING QUANTITIES		
DESCRIPTION	UNIT	QUANTITY
REMOVE PAVEMENT MARKER TYPE V LENS	EACH	25
WATER BLASTING EXISTING STRIPE	LF	300
PAVE STRIPE PERM-6 IN HD21-WHITE	LF	800
PAVE STRIPE PERM-12 IN HD21-WHITE	LF	1500
INLAID PAVEMENT MARKER W/R	EACH	80
PAVE MARKING-THERMO POLYMER MOD W 6-INCH CROSSWALK (CONCRETE)	SQFT	120
PAVE MARKING-THERMO POLYMER MOD W 24-INCH STOP BAR (CONCRETE)	SQFT	104
PAVE MARKING-THERMO POLYMER MOD W CURVE ARROW (CONCRETE)	SQFT	320
PAVE MARKING-THERMO POLYMER MOD W CHEVRONS - WET REFLECTIVE (CONCRETE)	SQFT	1150

- Remove existing Type V pavement marker lenses that are in line with the existing solid white stripes. Do Not Disturb & leave castings in place.
- Refresh the existing 6-inch solid white left & right turn lane lines. Stripe over for the old castings.
- Refresh the existing 12-inch center, solid white gore stripe(s). Stripe over any old castings.
- Install new bi-directional white/red inlaid pavement markers along both 6-inch & 12-inch solid white stripes.

NO SCALE

I-264 PAVEMENT MARKINGS
Eastbound Exit Ramp to US 31E
MP 15.5



Install 36" x 24" HPS-8 yield triangles approximately 40' in advance of crosswalk on US 31E North Ramp to I-264 East.

US 31E – Bardstown Rd

US 31E North Entrance Ramp to I-264 East

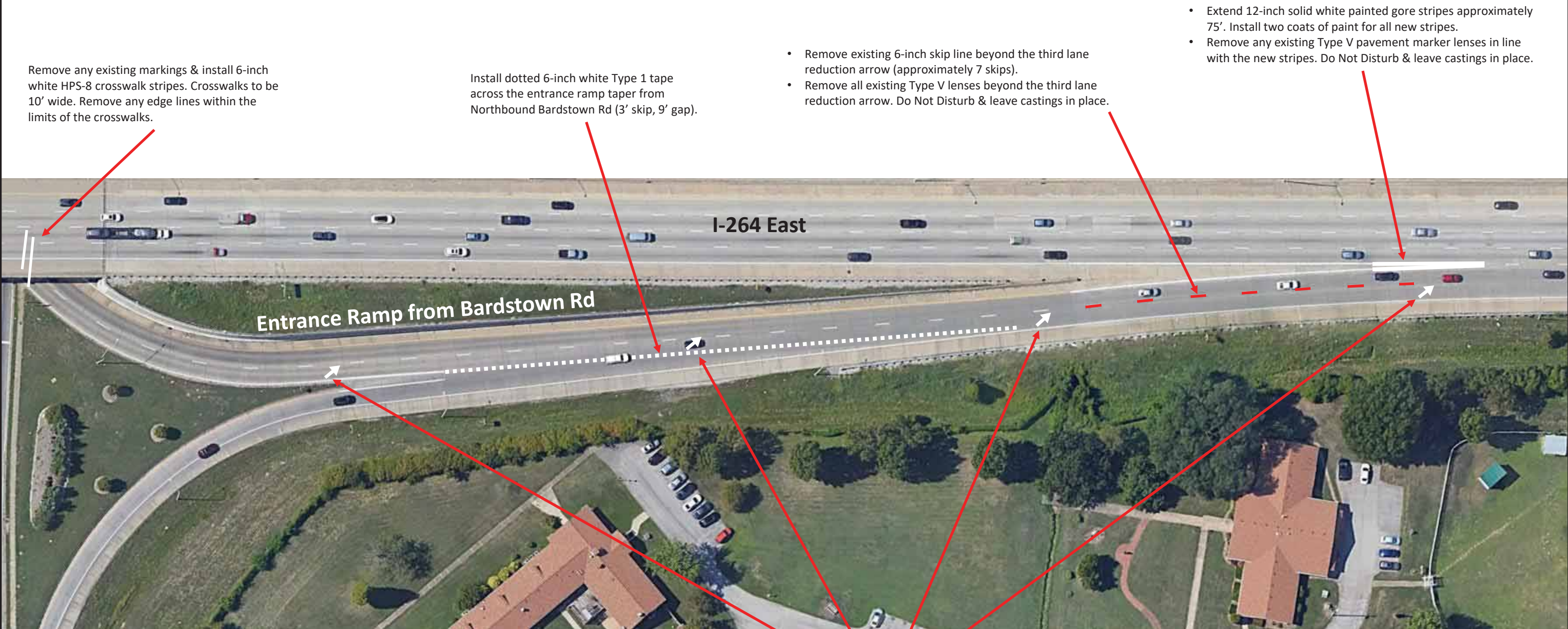
MATCHLINE
(SEE SHEET 12)

PAVEMENT MARKING QUANTITIES		
DESCRIPTION	UNIT	QUANTITY
WATER BLASTING EXISTING STRIPE	LF	30
PAVE MARKING-THERMO POLYMER MOD W 6-INCH CROSSWALK (CONCRETE)	SQFT	20
PAVE MARKING-THERMO POLYMER MOD W 24-INCH CROSSWALK (CONCRETE)	SQFT	200
PAVE MARKING-THERMO POLYMER MOD W 36-INCH YIELD BAR (CONCRETE)	SQFT	15

Install 6-inch white HPS-8 crosswalk stripes and 24-inch white HPS-8 bars with 24-inch gaps. Install bars parallel with the flow of traffic. Crosswalks to be 10' wide. Remove any edge lines within the limits of the crosswalks.

NO SCALE

I-264 PAVEMENT MARKINGS
Eastbound Entrance Ramp from Bardstown Rd
MP 15.7



**MATCHLINE
(SEE SHEET 11)**

PAVEMENT MARKING QUANTITIES		
DESCRIPTION	UNIT	QUANTITY
PAVE STRIPING-DUR TY 1-6 IN W	LF	125
REMOVE PAVEMENT MARKER TYPE V LENS	EACH	8
WATER BLASTING EXISTING STRIPE	LF	110
PAVE STRIPE PERM-12 IN HD21-WHITE	LF	350
PAVE MARKING-THERMO POLYMER MOD W 6-INCH CROSSWALK (CONCRETE)	SQFT	60
PAVE MARKING-THERMO POLYMER MOD W LANE REDUCTION ARROW - WET REFLECTIVE (CONCRETE)	SQFT	168

Install 4, wet reflective, HPS-8 lane reduction arrows on approximate 275' spacing. Install the first arrow in the concrete panel adjacent to the end of the raised island. If possible, avoid pavement joints with minor spacing adjustments.



NO SCALE

I-264 PAVEMENT MARKINGS
Eastbound Entrance Ramp from US 31E
MP 15.8



Install dotted 6-inch white Type 1 tape
across exit ramp taper (3' skip, 9' gap)

Install 48-inch white, wet reflective,
HPS-8 gore chevrons on 40' spacing.



PAVEMENT MARKING QUANTITIES		
DESCRIPTION	UNIT	QUANTITY
PAVE STRIPING-DUR TY 1-6 IN W	LF	75
PAVE MARKING-THERMO POLYMER MOD W CHEVRONS - WET REFLECTIVE (CONCRETE)	SQFT	1050

NO SCALE

I-264 PAVEMENT MARKINGS
Eastbound Exit Ramp to KY 155 South
MP 16.7



MATCHLINE
(SEE SHEET 16)

Install dotted 6-inch white Type 1 tape
across exit ramp taper (3' skip, 9' gap)

Install 48-inch white, wet reflective,
HPS-8 gore chevrons on 40' spacing.

- Remove existing 6-inch white skip line starting across from the tip of the KY 155 North exit gore extending east towards KY 1932.
- Install new painted 12-inch white dotted exit only stripe (3' skip, 9' gap). Install two coats of paint for all new stripes.
- Install new bi-directional white/red inlaid pavement markers along the dotted lane line (24' spacing). Utilize existing markers when possible.
- Remove any existing Type V lenses that do not conform to the new striping pattern. Do Not Disturb & leave castings in place.

Install one KY 1932 thermo elongated route shield in the exit
only lane approximately 700' east of the start of the 12-inch
dotted/tip of the KY 155 North exit ramp gore. Adjust location
as necessary to avoid damaged pavement and joints.



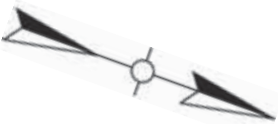
MATCHLINE
(SEE SHEET 15)

PAVEMENT MARKING QUANTITIES		
DESCRIPTION	UNIT	QUANTITY
PAVE STRIPING-DUR TY 1-6 IN W	LF	75
REMOVE PAVEMENT MARKER TYPE V LENS	EACH	15
WATER BLASTING EXISTING STRIPE	LF	300
PAVE STRIPE PERM-12 IN HD21-WHITE	LF	600
INLAID PAVEMENT MARKER W/R	EACH	45
PAVE MARKING-THERMO ELONG ROUTE SHIELD (CONCRETE)	EACH	1
PAVE MARKING-THERMO POLYMER MOD W CHEVRONS - WET REFLECTIVE (CONCRETE)	SQFT	850

NO SCALE

I-264 PAVEMENT MARKINGS
Eastbound Exit Ramp to KY 155 North
MP 17.1

- Remove existing 6-inch white skip.
- Install dotted 6-inch white Type 1 tape across the entrance ramp taper from Northbound Taylorsville Rd (3' skip, 9' gap).



Install 36" x 24" HPS-8 yield triangles on approximate 3-inch spacing at the existing yield sign in the island for Northbound Taylorsville Rd to I-264 East.

PAVEMENT MARKING QUANTITIES		
DESCRIPTION	UNIT	QUANTITY
PAVE STRIPING-DUR TY 1-6 IN W	LF	125
WATER BLASTING EXISTING STRIPE	LF	15
PAVE MARKING-THERMO POLYMER MOD W 36-INCH YIELD BAR (CONCRETE)	SQFT	18

NO SCALE

I-264 PAVEMENT MARKINGS
Eastbound Entrance Ramp from KY 155
MP 17.3

MATCHLINE
(SEE SHEET 14)

- Remove existing 6-inch white skip line starting across from the tip of the KY 155 North exit gore extending east to the extended KY 1932 Exit Ramp gore.
- Install new painted 12-inch dotted white exit only stripe to the start of the extended KY 1932 exit gore (3' skip, 9' gap). Install two coats of paint for all new stripes.
- Install new bi-directional white/red inlaid pavement markers along the dotted lane line (24' spacing). Utilize existing markers when possible.
- Remove any existing Type V lenses that do not conform to the new striping pattern. Do Not Disturb & leave castings in place.

Install KY 1932 thermo elongated route shields in both exit only lanes approximately 100' east of the end of the modified entrance ramp gore from KY 155. Adjust location as necessary to avoid damaged pavement and joints.



MATCHLINE
(SEE SHEET 17)



- Shorten existing 12-inch white gore stripes by approximately 80'.
- Extend existing 6-inch white skip line west to the end of the modified gore.
- Remove existing Type V lenses that do not conform to the new striping pattern. Do Not Disturb & leave castings in place. Utilize existing castings if possible for new skip pattern.

PAVEMENT MARKING QUANTITIES		
DESCRIPTION	UNIT	QUANTITY
REMOVE PAVEMENT MARKER TYPE V LENS	EACH	25
WATER BLASTING EXISTING STRIPE	LF	450
PAVE STRIPE PERM-6 IN HD21-WHITE	LF	50
PAVE STRIPE PERM-12 IN HD21-WHITE	LF	900
INLAID PAVEMENT MARKER W/R	EACH	52
PAVE MARKING-THERMO ELONG ROUTE SHIELD (CONCRETE)	EACH	2

- Extend 12-inch solid white painted gore stripes approximately 90'. Install two coats of paint for all new stripes.
- Remove any existing Type V pavement marker lenses in line with the new stripes. Do Not Disturb & leave castings in place.
- Install new bi-directional white/red inlaid pavement markers along the new 12-inch gore stripes.

NO SCALE

I-264 PAVEMENT MARKINGS
Eastbound between KY 155 & KY 1932
MP 17.4

PAVEMENT MARKING QUANTITIES		
DESCRIPTION	UNIT	QUANTITY
REMOVE PAVEMENT MARKER TYPE V LENS	EACH	6
PAVEMENT MARKING-THERMO LETTERS (CONCRETE)	EACH	10
PAVE STRIPE PERM-12 IN HD21-WHITE	LF	700
INLAID PAVEMENT MARKER W/R	EACH	20
PAVE MARKING-THERMO ELONG ROUTE SHIELD (CONCRETE)	EACH	3
PAVE MARKING-THERMO POLYMER MOD W CHEVRONS - WET REFLECTIVE (CONCRETE)	SQFT	2000

MATCHLINE
(SEE SHEET 16)



- Remove existing Type V pavement marker lenses that are in line with the existing 12-inch solid white exit only stripe. Do Not Disturb & leave castings in place.
- Install/refresh 12-inch solid exit only white stripe, starting 325' in advance of the tip of the gore split (approximately 90' in advance of start of existing solid). Stripe over the old castings. Install two coats of paint for all new stripes.
- Install new bi-directional white/red inlaid pavement markers along the 12-inch solid white.

Install 48-inch white, wet reflective, HPS-8 gore chevrons on 40' spacing.



Install KY 1932 thermo elongated route shields in both exit lanes approximately 200' east of the exit ramp sign truss. Approximately 40' beyond the route shields, install a thermo "NORTH" in the left exit lane and "SOUTH" in the right exit lane. Adjust location as necessary to avoid damaged pavement and joints.

Install I-264 thermo elongated route shield in the left exit lane approximately 100' east of the "NORTH". Adjust location as necessary to avoid damaged pavement and joints.

NO SCALE

- Install approximately 50' of 12-inch solid white painted gore stripe over the existing dotted lane line. Stripe over any old pavement marker castings. Install two coats of paint for all new stripes.
- Remove existing Type V pavement marker lenses that are in line with the proposed 12-inch solid white gore stripe. Do Not Disturb & leave castings in place.
- Install new bi-directional white/red inlaid pavement markers along the 12-inch solid white.

Install new bi-directional white/red inlaid pavement markers along the existing 12-inch dotted lane line (24' spacing). Utilize existing markers when possible.



PAVEMENT MARKING QUANTITIES		
DESCRIPTION	UNIT	QUANTITY
REMOVE PAVEMENT MARKER TYPE V LENS	EACH	5
PAVE STRIPE PERM-12 IN HD21-WHITE	LF	250
INLAID PAVEMENT MARKER W/R	EACH	35

- Install approximately 50' of 12-inch solid white painted gore stripe over the existing dotted lane line. Stripe over any old pavement marker castings. Install two coats of paint for all new stripes.
- Remove existing Type V pavement marker lenses that are in line with the proposed 12-inch solid white gore stripe. Do Not Disturb & leave castings in place.
- Install new bi-directional white/red inlaid pavement markers along the 12-inch solid white.

NO SCALE

I-264 PAVEMENT MARKINGS
Eastbound at KY 1932 Ramps
MP 17.9



MATCHLINE
(SEE SHEET 20)



Install new bi-directional white/red inlaid pavement markers along the existing 12-inch dotted lane line (24' spacing). Utilize existing markers when possible.

Install I-64 thermo elongated route shield in the exit only lane to I-64 East approximately 400' beyond (east of) the end of the entrance ramp gore from Breckenridge South. Approximately 40' beyond the shield, install a thermo "EAST". Adjacent to the I-64 shield in the I-64 East/West lane, install a wet reflective, HPS-8 lane use combo arrow. Adjust location as necessary to avoid damaged pavement and joints.

Install I-64 thermo elongated route shield in the exit only lane to I-64 East approximately 600' beyond (east of) the first I-64 East shield. Approximately 40' beyond the shield, install a thermo "EAST". Adjacent to the I-64 shield in the I-64 East/West lane, install a wet reflective, HPS-8 lane use combo arrow. Adjust location as necessary to avoid damaged pavement and joints.

Entrance Ramp from Breckenridge Ln North

I-264 East

Install new bi-directional white/red inlaid pavement markers along the existing 6-inch dotted lane line (24' spacing). Utilize existing markers when possible.

- Remove approximately 125' of the existing 6-inch dotted lane line.
- Remove existing Type V lenses that do not conform to the new striping pattern. Do Not Disturb & leave castings in place.

PAVEMENT MARKING QUANTITIES		
DESCRIPTION	UNIT	QUANTITY
REMOVE PAVEMENT MARKER TYPE V LENS	EACH	6
WATER BLASTING EXISTING STRIPE	LF	50
PAVEMENT MARKING-THERMO LETTERS (CONCRETE)	EACH	8
INLAID PAVEMENT MARKER W/R	EACH	80
PAVE MARKING-THERMO ELONG ROUTE SHIELD (CONCRETE)	EACH	2
PAVE MARKING-THERMO POLYMER MOD W LANE USE COMBO ARROW - WET REFLECTIVE (CONCRETE)	SQFT	120

NO SCALE

I-264 PAVEMENT MARKINGS
Eastbound between KY 1932 & I-64
MP 18.2

PAVEMENT MARKING QUANTITIES		
DESCRIPTION	UNIT	QUANTITY
REMOVE PAVEMENT MARKER TYPE V LENS	EACH	6
PAVE STRIPE PERM-12 IN HD21-WHITE	LF	250
INLAID PAVEMENT MARKER W/R	EACH	12
PAVE MARKING-THERMO POLYMER MOD W CHEVRONS - WET REFLECTIVE (CONCRETE)	SQFT	1100



MATCHLINE
(SEE SHEET 19)

Install new bi-directional white/red inlaid pavement markers along the existing 12-inch dotted lane line (24' spacing). Utilize existing markers when possible.

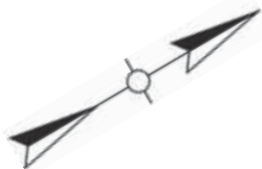
Install 48-inch white, wet reflective, HPS-8 gore chevrons on 40' spacing.



- Extend existing 12-inch solid white painted exit only stripe to I-64 East approximately 120' to the west. Stripe over any old castings. Install two coats of paint for all new stripes.
- Remove existing Type V pavement marker lenses that are in line with the extended 12-inch solid white exit only stripe. Do Not Disturb & leave castings in place.
- Install new bi-directional white/red inlaid pavement markers along the 12-inch solid white.

NO SCALE

I-264 PAVEMENT MARKINGS
Eastbound Exit Ramp to I-64 East
MP 18.5



Install dotted 6-inch white Type 1 tape
across exit ramp taper (3' skip, 9' gap)

Install 48-inch white, wet reflective,
HPS-8 gore chevrons on 40' spacing.



PAVEMENT MARKING QUANTITIES		
DESCRIPTION	UNIT	QUANTITY
PAVE STRIPING-DUR TY 1-6 IN W	LF	75
PAVE MARKING-THERMO POLYMER MOD W CHEVRONS - WET REFLECTIVE (CONCRETE)	SQFT	1300

NO SCALE

I-264 PAVEMENT MARKINGS
Eastbound Exit Ramp to I-64 West
MP 18.7



- Extend 12” solid white painted gore stripe over the existing yellow edge line back to the physical gore.
- Install approximately 50’ of 12-inch solid white painted gore stripe over the existing dotted lane line. Stripe over any old pavement marker castings. Install two coats of paint for all new stripes.
- Remove existing Type V pavement marker lenses that are in line with the proposed 12-inch solid white gore stripe. Do Not Disturb & leave castings in place.
- Install new bi-directional white/red inlaid pavement markers along the 12-inch solid white.

- Extend existing 12-inch solid white painted exit only stripe to US 60 approximately 250’ to the west. Stripe over any old castings. Install two coats of paint for all new stripes.
- Remove existing Type V pavement marker lenses that are in line with the extended 12-inch solid white exit only stripe. Do Not Disturb & leave castings in place.
- Install new bi-directional white/red inlaid pavement markers along the 12-inch solid white.



PAVEMENT MARKING QUANTITIES		
DESCRIPTION	UNIT	QUANTITY
REMOVE PAVEMENT MARKER TYPE V LENS	EACH	16
PAVE STRIPE PERM-12 IN HD21-WHITE	LF	1000
INLAID PAVEMENT MARKERS W/R	EACH	24

- Install approximately 70’ of 12-inch solid white painted gore stripe over the existing dotted lane line. Stripe over any old pavement marker castings. Install two coats of paint for all new stripes.
- Remove existing Type V pavement marker lenses that are in line with the proposed 12-inch solid white gore stripe. Do Not Disturb & leave castings in place.
- Install new bi-directional white/red inlaid pavement markers along the 12-inch solid white.

NO SCALE



MATCHLINE
(SEE SHEET 24)



Install 48-inch white, wet reflective, HPS-8 gore chevrons on 40' spacing.

Install dotted 6-inch white Type 1 tape across the entrance ramp taper from I-64 West (3' skip, 9' gap).

Install 48-inch white, wet reflective, HPS-8 gore chevrons on 40' spacing.

PAVEMENT MARKING QUANTITIES		
DESCRIPTION	UNIT	QUANTITY
PAVE STRIPING-DUR TY 1-6 IN W	LF	125
PAVE MARKING-THERMO POLYMER MOD W CHEVRONS - WET REFLECTIVE (CONCRETE)	SQFT	3400

NO SCALE

I-264 PAVEMENT MARKINGS
Eastbound Ramps at I-64 & US 60
MP 19.2

MATCHLINE
(SEE SHEET 23)

MATCHLINE
(SEE SHEET 25)

Install 4, wet reflective, HPS-8 lane reduction arrows on approximate 375' spacing. Install the last (eastern most on next sheet) arrow at the start of the lane ending taper. If possible, avoid pavement joints with minor spacing adjustments.



Install 48-inch white, wet reflective, HPS-8 gore chevrons on 40' spacing.

PAVEMENT MARKING QUANTITIES		
DESCRIPTION	UNIT	QUANTITY
REMOVE PAVEMENT MARKER TYPE V LENS	EACH	7
WATER BLASTING EXISTING STRIPE	LF	150
PAVE MARKING-THERMO POLYMER MOD W CHEVRONS - WET REFLECTIVE (CONCRETE)	SQFT	150
PAVE MARKING-THERMO POLYMER MOD W LANE REDUCTION ARROW - WET REFLECTIVE (CONCRETE)	SQFT	126

- Remove existing 6-inch skip line beyond the second lane reduction arrow.
- Remove all existing Type V lenses where the skip line has been removed. Do Not Disturb & leave castings in place.

NO SCALE

I-264 PAVEMENT MARKINGS
Eastbound Mainline & CD Ramps at US 60
MP 19.4

MATCHLINE
(SEE SHEET 24)

- Remove existing 6-inch skip line beyond the second lane reduction arrow.
- Remove all existing Type V lenses where the skip line has been removed. Do Not Disturb & leave castings in place.

Install 4, wet reflective, HPS-8 lane reduction arrows on approximate 375' spacing. Install the last (eastern most) arrow at the start of the lane ending taper. If possible, avoid pavement joints with minor spacing adjustments.

- Install new 6-inch solid white painted 660' edge line taper. Verify new alignment with KYTC prior to striping. Install two coats of paint for all new stripes.
- Remove existing white edge line within limits of proposed edge line taper. Verify removal limits with KYTC prior to beginning work.



Install 24-inch white, wet reflective, HPS-8 gore chevrons on 20' spacing.

PAVEMENT MARKING QUANTITIES		
DESCRIPTION	UNIT	QUANTITY
REMOVE PAVEMENT MARKER TYPE V LENS	EACH	5
WATER BLASTING EXISTING STRIPE	LF	800
PAVE STRIPE PERM-6 IN HD21-WHITE	LF	1400
PAVE MARKING-THERMO POLYMER MOD W CHEVRONS - WET REFLECTIVE (CONCRETE)	SQFT	220
PAVE MARKING-THERMO POLYMER MOD W LANE REDUCTION ARROW - WET REFLECTIVE (CONCRETE)	SQFT	42

NO SCALE

I-264 PAVEMENT MARKINGS
Eastbound Mainline & Exit to US 60 East
MP 19.55

PAVEMENT MARKING QUANTITIES		
DESCRIPTION	UNIT	QUANTITY
REMOVE PAVEMENT MARKER TYPE V LENS	EACH	3
PAVE STRIPE PERM-6 IN HD21-WHITE	LF	200
INLAID PAVEMENT MARKER W/R	EACH	6
PAVE MARKING-THERMO POLYMER MOD W CURVE ARROW (CONCRETE)	SQFT	96
PAVE MARKING-THERMO POLYMER MOD W CHEVRONS - WET REFLECTIVE (CONCRETE)	SQFT	400

COUNTY OF	ITEM NO.	SHEET NO.
JEFFERSON	5-938.00	26



Install 3 sets of HPS-8 right curve arrows. Begin 40’ back of the left turn stop bar, then on equal, max 80’ spacing to the start of the solid white stripe.

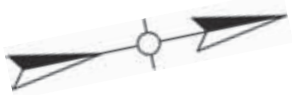
Install 48-inch white, wet reflective, HPS-8 gore chevrons on 40’ spacing.

- Remove existing Type V pavement marker lenses that are in line with the existing solid white stripe. Do Not Disturb & leave castings in place.
- Refresh the existing 6-inch solid white right turn lane line. Stripe over for the old castings.
- Install new bi-directional white/red inlaid pavement markers along 6-inch solid white stripe.

NO SCALE

- Extend existing 12-inch solid white painted gore stripes approximately 15' beyond existing solid. Install two coats of paint for all new stripes.
- Install new bi-directional white/red inlaid pavement markers along the 12-inch solid white.

- Install approximately 65' of 12-inch solid white painted gore stripe over the existing dotted lane line. Stripe over any old pavement marker castings. Install two coats of paint for all new stripes.
- Remove existing Type V pavement marker lenses that are in line with the proposed 12-inch solid white gore stripe. Do Not Disturb & leave castings in place.
- Install new bi-directional white/red inlaid pavement markers along the 12-inch solid white.

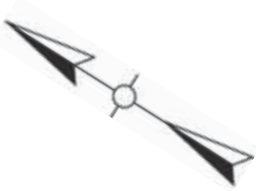


Install 24-inch white, wet reflective, HPS-8 gore chevrons on 20' spacing.

PAVEMENT MARKING QUANTITIES		
DESCRIPTION	UNIT	QUANTITY
REMOVE PAVEMENT MARKER TYPE V LENS	EACH	2
PAVE STRIPE PERM-12 IN HD21-WHITE	LF	300
INLAID PAVEMENT MARKERS W/R	EACH	8
PAVE MARKING-THERMO POLYMER MOD W CHEVRONS - WET REFLECTIVE (CONCRETE)	SQFT	200

NO SCALE

I-264 PAVEMENT MARKINGS
Eastbound CD Ramp at US 60
MP 19.8



Install dotted 6-inch white Type 1 tape across the KY 146 Entrance Ramp to I-264 East (3' skip, 9' gap)

Install 48-inch white, wet reflective, HPS-8 gore chevrons on 40' spacing.

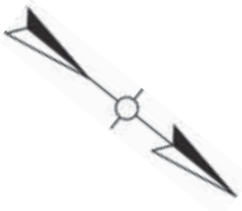


Install new bi-directional white/red inlaid pavement markers along the existing 12-inch solid white gore stripes to meet current standards.

PAVEMENT MARKING QUANTITIES		
DESCRIPTION	UNIT	QUANTITY
PAVE STRIPING-DUR TY 1-6 IN W	LF	60
INLAID PAVEMENT MARKER W/R	EACH	22
PAVE MARKING-THERMO POLYMER MOD W CHEVRON	SQFT	300

NO SCALE

I-264 PAVEMENT MARKINGS
Eastbound Entrance Ramps from US 60 West/KY 146
MP 19.9



Install white, wet reflective, HPS-8 gore chevrons. KYTC to determine chevron sizes & spacing at the time of installation.

Extend existing 12-inch solid white painted gore stripes approximately 10'. Install two coats of paint for all new stripes.



- Remove the last approximately 100' of 6-inch dotted lane line from US 60 entrance ramp (9 skips).
- Remove all existing Type V lenses where the skip line has been removed. Do Not Disturb & leave castings in place.

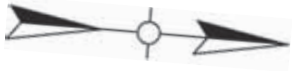
PAVEMENT MARKING QUANTITIES		
DESCRIPTION	UNIT	QUANTITY
REMOVE PAVEMENT MARKER TYPE V LENS	EACH	5
WATER BLASTING EXISTING STRIPE	LF	35
PAVE STRIPE PERM-12 IN HD21-WHITE	LF	50
PAVE MARKING-THERMO POLYMER MOD W CHEVRONS - WET REFLECTIVE (CONCRETE)	SQFT	2400

NO SCALE

I-264 PAVEMENT MARKINGS
Eastbound Entrance Ramp from US 60/I-64
MP 20.1

- Extend existing 12-inch solid white painted exit only stripe to KY 1447 approximately 200’ to the west. Stripe over any old castings. Install two coats of paint for all new stripes.
- Remove existing Type V pavement marker lenses that are in line with the extended 12-inch solid white exit only stripe. Do Not Disturb & leave castings in place.
- Install new bi-directional white/red inlaid pavement markers along the 12-inch solid white. Do Not Install pavement markers on bridges.

Install one I-71 thermo elongated route shield in the center lane adjacent to the US 42 shield. Install thermo “TO” approximately 40’ in advance of the I-71 shield and thermo “NORTH” 40’ beyond the I-71 shield. Adjust location as necessary to avoid damaged pavement and joints.



Install 48-inch white, wet reflective, HPS-8 gore chevrons on 40’ spacing.

MATCHLINE
(SEE SHEET 31)



Install one US 42 thermo elongated route shield in the exit only lane approximately 120’ in advance of the Westport Rd crash cushion. Adjust location as necessary to avoid damaged pavement and joints.

Install one KY 22 thermo elongated route shield in the exit only lane approximately 100’ beyond the US 42 shield. Adjust location as necessary to avoid damaged pavement and joints.

PAVEMENT MARKING QUANTITIES		
DESCRIPTION	UNIT	QUANTITY
REMOVE PAVEMENT MARKER TYPE V LENS	EACH	16
PAVEMENT MARKING-THERMO LETTERS (ASPHALT)	EACH	7
PAVE STRIPE PERM-12 IN HD21-WHITE	LF	1800
INLAID PAVEMENT MARKER W/R	EACH	46
PAVE MARKING-THERMO ELONG ROUTE SHIELD (ASPHALT)	EACH	3
PAVE MARKING-THERMO POLYMER MOD W CHEVRONS - WET REFLECTIVE (ASPHALT)	SQFT	525

- Remove existing Type V pavement marker lenses that are in line with the existing 12-inch solid white exit only stripe. Do Not Disturb & leave castings in place.
- Install/refresh 12-inch solid exit only white stripe. Stripe over the old castings.
- Install new bi-directional white/red inlaid pavement markers along the 12-inch solid white. Do Not Install pavement markers on bridges.

NO SCALE

I-264 PAVEMENT MARKINGS
Eastbound Exit Ramp to KY 1447
MP 20.6

MATCHLINE
(SEE SHEET 30)

- Extend left turn lane approximately 350' west towards the top of the ramp by installing a new 6-inch yellow painted edge line and 6-inch white skip line. Install two coats of paint for all new stripes. Maintain consistent, 12' minimum lanes and 6' minimum shoulder.
- Install new bi-directional yellow/red inlaid pavement markers along the new yellow edge line and white/red markers along the skip line.
- Remove the existing yellow edge line along the limits of the extended lane.
- Remove existing Type V pavement marker lenses along the removed yellow edge line. Do Not Disturb & leave castings in place.



Approximate 150' edge line taper for extended left turn lane. Taper to begin approximately 500' in advance of existing full width left turn lane.

Install 5 sets of HPS-8 curve/combo arrows. Begin 40' back of the stop bar, then on 80' spacing to the start of the solid white stripes.

Remove existing markings to refresh 24-inch white HPS-8 stop bars and 6-inch white HPS-8 crosswalk stripes.

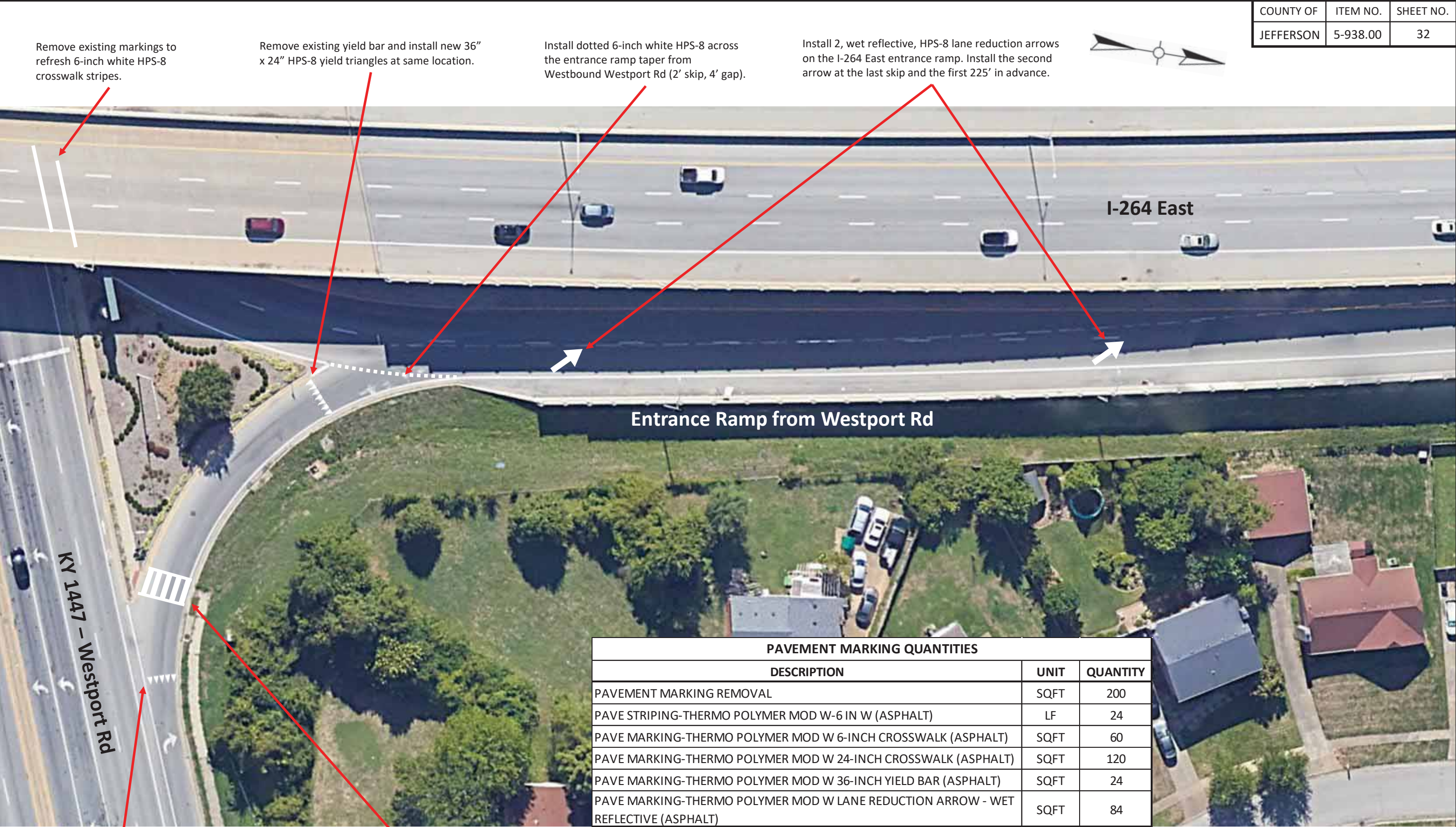


PAVEMENT MARKING QUANTITIES		
DESCRIPTION	UNIT	QUANTITY
PAVEMENT MARKING REMOVAL	SQFT	177
REMOVE PAVEMENT MARKER TYPE V LENS	EACH	20
WATER BLASTING EXISTING STRIPE	LF	525
PAVE STRIPE PERM-6 IN HD21-WHITE	LF	1200
PAVE STRIPE PERM-6 IN HD21-YELLOW	LF	1050
INLAID PAVEMENT MARKER W/R	EACH	14
INLAID PAVEMENT MARKER Y/R	EACH	14
PAVE MARKING-THERMO POLYMER MOD W 6-INCH CROSSWALK (ASPHALT)	SQFT	65
PAVE MARKING-THERMO POLYMER MOD W 24-INCH STOP BAR (ASPHALT)	SQFT	112
PAVE MARKING-THERMO POLYMER MOD W CURVE ARROW (ASPHALT)	SQFT	192
PAVE MARKING-THERMO POLYMER MOD W COMBO ARROW (ASPHALT)	SQFT	108

- Remove existing Type V pavement marker lenses that are in line with the existing solid white stripes. Do Not Disturb & leave castings in place.
- Extend existing 6-inch solid white stripes 100' to the west & refresh the existing left & right turn lane lines. Stripe over for the old castings.
- Install new bi-directional white/red inlaid pavement markers along both 6-inch solid white stripes.

NO SCALE

I-264 PAVEMENT MARKINGS
Eastbound Exit Ramp to KY 1447
MP 20.8

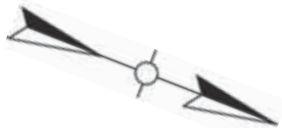


Install 36" x 24" HPS-8 yield triangles approximately 40' in advance of crosswalk on KY 1447 West Ramp to I-264 East.

Install 6-inch white HPS-8 crosswalk stripes and 24-inch white HPS-8 bars with 24-inch gaps. Install bars parallel with the flow of traffic. Crosswalks to be minimum 10' wide and include the full width of the sidewalk ramp.

NO SCALE

PAVEMENT MARKING QUANTITIES		
DESCRIPTION	UNIT	QUANTITY
PAVEMENT MARKING-THERMO LETTERS (ASPHALT)	EACH	7
PAVE STRIPE PERM-6 IN HD21-WHITE	LF	225
PAVE MARKING-THERMO ELONG ROUTE SHIELD (ASPHALT)	EACH	3



Install one I-71 thermo elongated route shield in the center lane adjacent to the US 42 shield. Install thermo “TO” approximately 40’ in advance of the I-71 shield and thermo “NORTH” 40’ beyond the I-71 shield. Adjust location as necessary to avoid damaged pavement and joints.

Install one KY 22 thermo elongated route shield in the exit only lane approximately 100’ beyond the US 42 shield. Adjust location as necessary to avoid damaged pavement and joints.



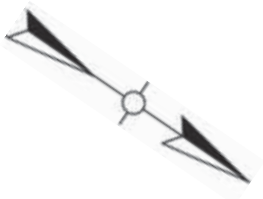
I-264 East

Entrance Ramp from Westport Rd

Install one US 42 thermo elongated route shield in the exit only lane approximately at the end of the barrier/sound wall at the entrance ramp from Westport Rd. Adjust location as necessary to avoid damaged pavement and joints.

Install approximately 400’ of dotted 6-inch white from the tip of the entrance ramp gore from Westport Rd (3’ skip, 9’ gap).

NO SCALE



Extend existing 12-inch solid white painted exit only stripe to US 42 approximately 300’ to the west. Break stripe at all intact pavement markers. Install two coats of paint for all new stripes.

Refresh/install 24” white, wet reflective HPS-8 gore chevrons at existing chevron locations.



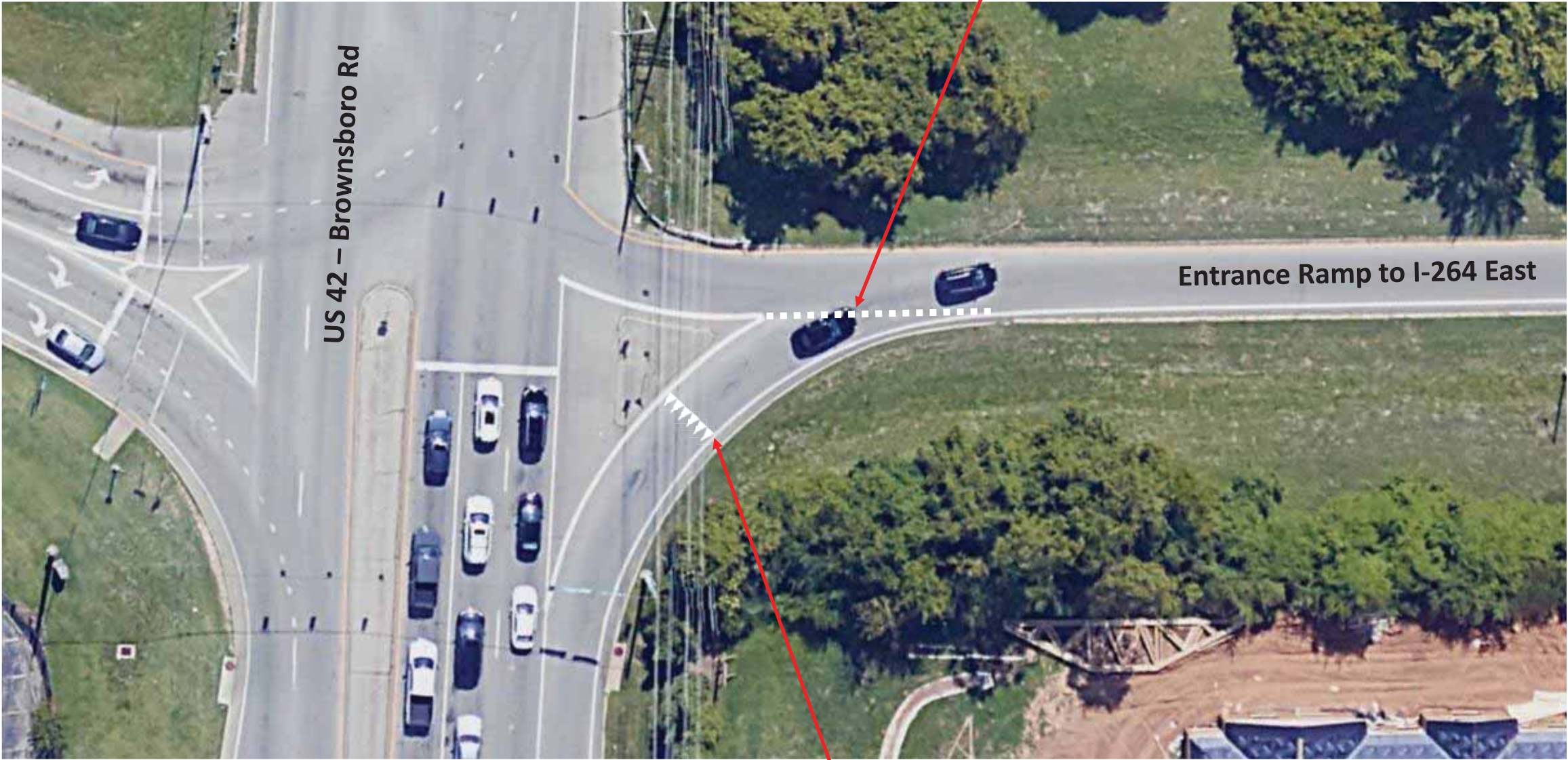
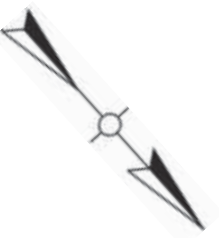
- Install 12-inch dotted white HPS-8 across the KY 22 ramp taper (3’ skip, 9’ gap).
- Refresh existing 12-inch dotted white with HPS-8 striping.

PAVEMENT MARKING QUANTITIES		
DESCRIPTION	UNIT	QUANTITY
PAVE STRIPE PERM-12 IN HD21-WHITE	LF	650
PAVE MARKING-DOTTED LANE EXTEN (THERMO POLYMER MOD-12 IN W ASPHALT)	LF	225
PAVE MARKING-THERMO POLYMER MOD W CHEVRONS - WET REFLECTIVE (ASPHALT)	SQFT	375

NO SCALE

I-264 PAVEMENT MARKINGS
Eastbound Exit Ramp to US 42
MP 21.8

PAVEMENT MARKING QUANTITIES		
DESCRIPTION	UNIT	QUANTITY
PAVE STRIPING-THERMO POLYMER MOD-6 IN W (ASPHALT)	LF	20
PAVE MARKING-THERMO POLYMER MOD W 36-INCH YIELD BAR (ASPHALT)	SQFT	18



Install dotted 6-inch white HPS-8 across the entrance ramp taper from Westbound US 42 (2' skip, 4' gap).

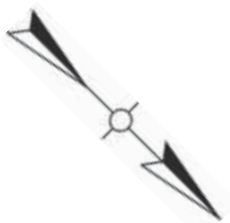
Install 36" x 24" HPS-8 yield triangles at location of existing yield sign on the US 42 West ramp to I-264 East.

NO SCALE

I-264 PAVEMENT MARKINGS
Eastbound Entrance Ramp from US 42
MP 22.15

NOTE: Work shown on this sheet falls within the limits of a future reconstruction project. These work items may be modified or omitted. Coordinate with the Engineer prior to purchasing or installing these items.

COUNTY OF	ITEM NO.	SHEET NO.
JEFFERSON	5-938.00	36



MATCHLINE
(SEE SHEET 37)

Install two I-71 thermo elongated route shields in the I-71 South exit only lanes (middle and far left lane) adjacent to the I-71 North shield. Install thermo “SOUTH” adjacent to the thermo NORTH.



Install one I-71 thermo elongated route shield in the I-71 North exit only lane (far right lane) approximately 300’ east of the end of the entrance ramp gore from US 42. Install thermo “NORTH” approximately 40’ beyond the I-71 shield. Adjust location as necessary to avoid damaged pavement and joints.

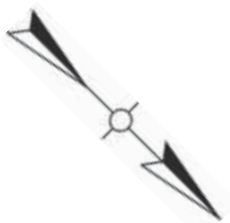
PAVEMENT MARKING QUANTITIES		
DESCRIPTION	UNIT	QUANTITY
PAVEMENT MARKING-THERMO LETTERS (ASPHALT)	EACH	15
PAVE MARKING-THERMO ELONG ROUTE SHIELD (ASPHALT)	EACH	3

NO SCALE

I-264 PAVEMENT MARKINGS
Eastbound between US 42 & I-71
MP 22.5

MATCHLINE
(SEE SHEET 36)

COUNTY OF	ITEM NO.	SHEET NO.
JEFFERSON	5-938.00	37



Install 48-inch white, wet reflective,
HPS-8 gore chevrons on 40' spacing.



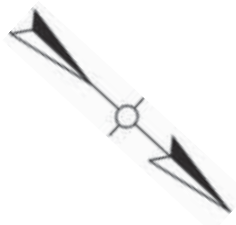
PAVEMENT MARKING QUANTITIES		
DESCRIPTION	UNIT	QUANTITY
PAVE MARKING-THERMO POLYMER MOD W CHEVRONS - WET REFLECTIVE (ASPHALT)	SQFT	500

NO SCALE

I-264 PAVEMENT MARKINGS
Eastbound Exit Ramps to I-71
MP 22.7

NOTE: Work shown on this sheet falls within the limits of a future reconstruction project. These work items may be modified or omitted. Coordinate with the Engineer prior to purchasing or installing these items.

COUNTY OF	ITEM NO.	SHEET NO.
JEFFERSON	5-938.00	38



Install one US 42 thermo elongated route shield in the exit only lane approximately at the start of the barrier wall & concrete right shoulder. Adjust location as necessary to avoid damaged pavement and joints.

Install one US 42 thermo elongated route shield in the exit only lane approximately 100' beyond the start of the 12-inch dotted exit only stripe. Adjust location as necessary to avoid damaged pavement and joints.



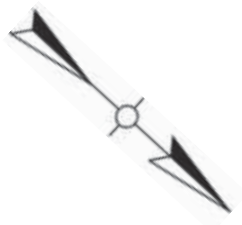
PAVEMENT MARKING QUANTITIES		
DESCRIPTION	UNIT	QUANTITY
PAVE STRIPE PERM-12 IN HD21-WHITE	LF	425
PAVE MARKING-THERMO ELONG ROUTE SHIELD (ASPHALT)	EACH	2

Extend existing 12-inch solid white painted gore extension from I-71 South approximately 200' to the west. Break striping at intact pavement markers. Install two coats of paint for all new stripes.

NO SCALE

I-264 PAVEMENT MARKINGS
Westbound between I-71 & US 42
MP 22.6

PAVEMENT MARKING QUANTITIES		
DESCRIPTION	UNIT	QUANTITY
PAVE STRIPE PERM-6 IN HD21-WHITE	LF	300
PAVE STRIPE PERM-12 IN HD21-WHITE	LF	525
PAVE MARKING-THERMO POLYMER MOD W CURVE ARROW (ASPHALT)	SQFT	64
PAVE MARKING-THERMO POLYMER MOD W CHEVRONS - WET REFLECTIVE (ASPHALT)	SQFT	325



Install 2 new sets of HPS-8 curve arrows on 80' spacing.

Install new 6-inch white painted skip with 30' gap from existing skip. Install two coats of paint for all new stripes.



Extend existing 6-inch solid white painted stripe approximately 130'. Break stripe at all intact pavement markers. Install two coats of paint for all new stripes.

Install 48-inch white wet reflective, HPS-8 gore chevrons on 40' spacing.

Extend existing 12-inch solid white painted exit only stripe to US 42 approximately 250' to the east. Break stripe at all intact pavement markers. Install two coats of paint for all new stripes.

NO SCALE

I-264 PAVEMENT MARKINGS
Westbound Exit Ramp to US 42
MP 22.3



Install 3, wet reflective, HPS-8 lane reduction arrows on 225' spacing. Install the last arrow at the end of the extended skip line. If possible, avoid pavement joints with minor spacing adjustments.

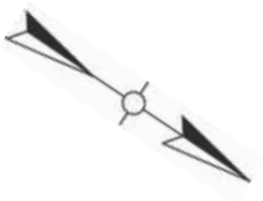


Extend 6-inch white painted skip line (10' skip, 30' gap) 240'. Verify minimum 24' ramp width at end of skip line. Install two coats of paint for all new stripes.

PAVEMENT MARKING QUANTITIES		
DESCRIPTION	UNIT	QUANTITY
PAVE STRIPE PERM-6 IN HD21-WHITE	LF	150
PAVE MARKING-THERMO POLYMER MOD W LANE REDUCTION ARROW - WET REFLECTIVE (ASPHALT)	SQFT	126

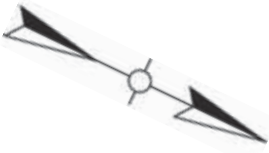
NO SCALE

PAVEMENT MARKING QUANTITIES		
DESCRIPTION	UNIT	QUANTITY
REMOVE PAVEMENT MARKER TYPE V LENS	EACH	2
WATER BLASTING EXISTING STRIPE	LF	50
PAVE STRIPE PERM-6 IN HD21-WHITE	LF	150



- Install approximately 250’ of 6-inch dotted white starting at the end of the gore (3’ skip, 9’ gap). Install two coats of paint for all new stripes.
- Remove existing 6-inch white skip line beyond gore.
- Remove any existing Type V lenses that do not conform to the new striping pattern. Do Not Disturb & leave castings in place.

NO SCALE



PAVEMENT MARKING QUANTITIES		
DESCRIPTION	UNIT	QUANTITY
PAVEMENT MARKING REMOVAL	SQFT	210
REMOVE PAVEMENT MARKER TYPE V LENS	EACH	10
PAVE STRIPE PERM-6 IN HD21-WHITE	LF	800
PAVE STRIPE PERM-12 IN HD21-WHITE	LF	175
INLAID PAVEMENT MARKER W/R	EACH	25
PAVE MARKING-THERMO ELONG ROUTE SHIELD (ASPHALT)	EACH	4
PAVE STRIPING-THERMO POLYMER MOD-6 IN W (ASPHALT)	LF	75
PAVE MARKING-THERMO POLYMER MOD W 6-INCH CROSSWALK (ASPHALT)	SQFT	90
PAVE MARKING-THERMO POLYMER MOD W 24-INCH STOP BAR (ASPHALT)	SQFT	120
PAVE MARKING-THERMO POLYMER MOD W CURVE ARROW (ASPHALT)	SQFT	288
PAVE MARKING-THERMO POLYMER MOD W CHEVRONS - WET REFLECTIVE (ASPHALT)	SQFT	1000

Remove existing markings to refresh 24-inch white HPS-8 stop bars and 6-inch white HPS-8 crosswalk stripes.

Install 5 sets of HPS-8 curve arrows. Begin 40' back of the stop bar, then on 80' spacing.



- Remove existing Type V pavement marker lenses that are in line with the existing & extended solid white stripes. Do Not Disturb & leave castings in place.
- Extend existing solid white stripes approximately 80'. Refresh the existing 6-inch solid white left & right turn lane lines. Stripe over the old castings.
- Install new bi-directional white/red inlaid pavement markers along the solid white stripes.

Install I-64 thermo elongated route shield in the center lane approximately 100' beyond the I-264 shield. Adjust location as necessary to avoid damaged pavement and joints.

Install 48-inch white, wet reflective, HPS-8 chevrons on 40' spacing.

Approximately 300' beyond the overhead sign truss, install I-264 thermo elongated route shields in the left and center lanes and a US 60 thermo elongated route shield in the right, exit only lane. Adjust location as necessary to avoid damaged pavement and joints.

Install dotted 6-inch white HPS-8 across exit ramp taper (3' skip, 9' gap)

NO SCALE

I-264 PAVEMENT MARKINGS
Westbound Exit Ramp to KY 1447
MP 21.0

MATCHLINE
(SEE SHEET 45)

PAVEMENT MARKING QUANTITIES		
DESCRIPTION	UNIT	QUANTITY
REMOVE PAVEMENT MARKER TYPE V LENS	EACH	8
WATER BLASTING EXISTING STRIPE	LF	600
PAVE STRIPE PERM-6 IN HD21-WHITE	LF	1200
PAVE MARKING-THERMO ELONG ROUTE SHIELD (ASPHALT)	EACH	1

COUNTY OF	ITEM NO.	SHEET NO.
JEFFERSON	5-938.00	44



MATCHLINE
(SEE SHEET 43)



- Install new 6-inch solid white painted edge line taper. Edge line to uniformly taper through the curve over approximately 500', beginning at the start of the railroad bridge. Verify new alignment with KYTC prior to striping. Install two coats of paint for all new stripes.
- Remove existing white edge line within limits of proposed edge line taper. Verify removal limits with KYTC prior to beginning work.

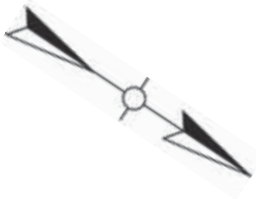
- Remove existing 6-inch dotted lane line.
- Remove existing Type V lenses that do not conform to the new striping pattern. Do Not Disturb & leave castings in place.

Install I-64 thermo elongated route shield in the center lane approximately 100' beyond the I-264 shield. Adjust location as necessary to avoid damaged pavement and joints.

NO SCALE

I-264 PAVEMENT MARKINGS
Westbound between KY 1447 & US 60/I-64
MP 20.5

PAVEMENT MARKING QUANTITIES		
DESCRIPTION	UNIT	QUANTITY
REMOVE PAVEMENT MARKER TYPE V LENS	EACH	12
PAVE STRIPE PERM-12 IN HD21-WHITE	LF	600
INLAID PAVEMENT MARKER W/R	EACH	14
PAVE MARKING-THERMO POLYMER MOD W CHEVRONS - WET REFLECTIVE (CONCRETE)	SQFT	1300



MATCHLINE
(SEE SHEET 46)

MATCHLINE
(SEE SHEET 44)

Install 48-inch white, wet reflective, HPS-8 gore chevrons on 40' spacing.

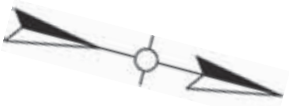


- Extend existing 12-inch solid white painted exit only stripe approximately 250' to the east. Stripe over any old castings. Install two coats of paint for all new stripes.
- Remove existing Type V pavement marker lenses that are in line with the extended 12-inch solid white exit only stripe. Do Not Disturb & leave castings in place.
- Install new bi-directional white/red inlaid pavement markers along the 12-inch solid white.

NO SCALE

I-264 PAVEMENT MARKINGS
Westbound Exit Ramp to US 60/I-64
MP 20.3

PAVEMENT MARKING QUANTITIES		
DESCRIPTION	UNIT	QUANTITY
PAVE STRIPING-DUR TY 1-6 IN W	LF	60
REMOVE PAVEMENT MARKER TYPE V LENS	EACH	10
WATER BLASTING EXISTING STRIPE	LF	200
PAVE STRIPE PERM-12 IN HD21-WHITE	LF	400
INLAID PAVEMENT MARKER W/R	EACH	32
PAVE MARKING-THERMO POLYMER MOD W CHEVRONS - WET REFLECTIVE (CONCRETE)	SQFT	475



MATCHLINE
(SEE SHEET 47)

MATCHLINE
(SEE SHEET 45)



Install 48-inch white, wet reflective, HPS-8 gore chevrons on 40' spacing.

- Extend existing 12-inch painted dotted white exit only stripe approximately 750' to the east (3' skip, 9' gap).
- Remove existing 6-inch white skip line within limits of extended dotted lane line.
- Install new bi-directional white/red inlaid pavement markers along the dotted lane line (24' spacing). Utilize existing markers when possible.
- Remove any existing Type V lenses that do not conform to the new striping pattern. Do Not Disturb & leave castings in place.

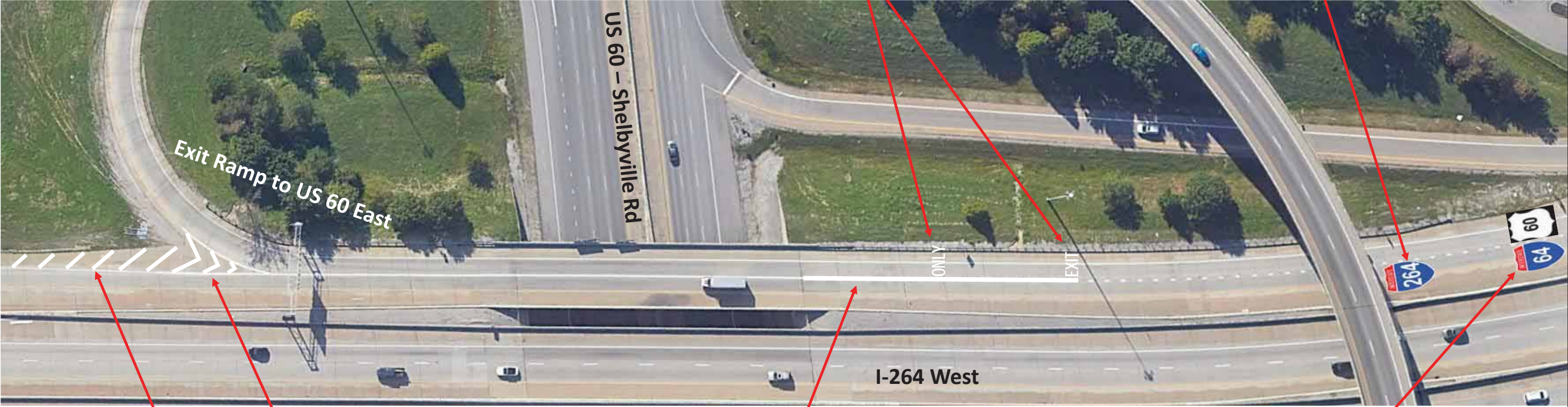
NO SCALE

I-264 PAVEMENT MARKINGS
Westbound Exit Ramp to US 60 West
MP 20.0

PAVEMENT MARKING QUANTITIES		
DESCRIPTION	UNIT	QUANTITY
REMOVE PAVEMENT MARKER TYPE V LENS	EACH	10
PAVE STRIPE PERM-12 IN HD21-WHITE	LF	425
INLAID PAVEMENT MARKER W/R	EACH	12
PAVE MARKING-THERMO ELONG ROUTE SHIELD (CONCRETE)	EACH	3
PAVE MARKING-THERMO POLYMER MOD W CHEVRONS & CROSS HATCH - WET REFLECTIVE (CONCRETE)	SQFT	350
PAVE MARKING-THERMO POLYMER MOD W LETTERS - WET REFLECTIVE (CONCRETE)	SQFT	38

- Install wet reflective, HPS-8 “EXIT” in the US 60 East exit only lane at the start of the 12” solid white stripe.
- Install wet reflective, HPS-8 “ONLY” in the US 60 East exit only lane approximately 100’ beyond the “EXIT”.
- Adjust location as necessary to avoid damaged pavement and joints.

Install I-264 thermo elongated route shield in the left lane approximately 100’ beyond the I-64 shield. Adjust location as necessary to avoid damaged pavement and joints.



Install 24-inch white, wet reflective, HPS-8 shoulder crosshatching on 20’ spacing from the end of the gore chevrons to the end of the shoulder narrowing (approximately 120’).

Install 24-inch white, wet reflective, HPS-8 gore chevrons on 20’ spacing.

- Extend existing 12-inch solid white painted exit only stripe approximately 200’ to the east. Stripe over any old castings. Install two coats of paint for all new stripes.
- Remove existing Type V pavement marker lenses that are in line with the extended 12-inch solid white exit only stripe. Do Not Disturb & leave castings in place.
- Install new bi-directional white/red inlaid pavement markers along the 12-inch solid white.

Install I-64 thermo elongated route shield in the left lane and a US 60 thermo elongated route shield in the right, exit only lane approximately 175’ beyond the overhead sign truss at the US 60 West exit ramp gore. Adjust location as necessary to avoid damaged pavement and joints.

MATCHLINE
(SEE SHEET 46)

NO SCALE

I-264 PAVEMENT MARKINGS
Westbound Exit Ramp to US 60 East
MP 19.7

- Extend existing 12-inch painted dotted white exit only stripe east to the end of the entrance ramp gore from US 60 (3' skip, 9' gap).
- Remove existing 6-inch white skip line within limits of extended dotted lane line.
- Install new bi-directional white/red inlaid pavement markers along the dotted lane line (24' spacing). Utilize existing markers when possible.
- Remove any existing Type V lenses that do not conform to the new striping pattern. Do Not Disturb & leave castings in place.



MATCHLINE
(SEE SHEET 49)

PAVEMENT MARKING QUANTITIES		
DESCRIPTION	UNIT	QUANTITY
REMOVE PAVEMENT MARKER TYPE V LENS	EACH	5
WATER BLASTING EXISTING STRIPE	LF	100
PAVE STRIPE PERM-12 IN HD21-WHITE	LF	450
INLAID PAVEMENT MARKER W/R	EACH	18

- Extend 12-inch solid white painted gore stripes approximately 70'. Install two coats of paint for all new stripes.
- Remove any existing Type V pavement marker lenses in line with the new stripes. Do Not Disturb & leave castings in place.
- Install new bi-directional white/red inlaid pavement markers along the new 12-inch gore stripes.

NO SCALE



MATCHLINE
(SEE SHEET 50)

- Install 12-inch solid white painted exit only stripe approximately 300’ to the east from the start of the existing gore. Stripe over any old castings. Install two coats of paint for all new stripes.
- Remove existing Type V pavement marker lenses that are in line with the extended 12-inch solid white exit only stripe. Do Not Disturb & leave castings in place.
- Install new bi-directional white/red inlaid pavement markers along the 12-inch solid white.

MATCHLINE
(SEE SHEET 48)

Install I-264 thermo elongated route shields in the two left lanes and I-64 thermo elongated route shields in the right two lanes, approximately 200’ beyond the overhead sign truss. Adjust location as necessary to avoid damaged pavement and joints.



PAVEMENT MARKING QUANTITIES		
DESCRIPTION	UNIT	QUANTITY
REMOVE PAVEMENT MARKER TYPE V LENS	EACH	14
PAVEMENT MARKING-THERMO LETTERS (CONCRETE)	EACH	8
PAVE STRIPE PERM-12 IN HD21-WHITE	LF	650
INLAID PAVEMENT MARKER W/R	EACH	16
PAVE MARKING-THERMO ELONG ROUTE SHIELD (CONCRETE)	EACH	4

Approximately 40’ beyond the I-64 route shields, install a thermo “EAST” in the left I-64 lane and “WEST” in the right exit lane. Adjust location as necessary to avoid damaged pavement and joints.

NO SCALE

I-264 PAVEMENT MARKINGS
Westbound approaching Exit Ramp to I-64 West
MP 19.3



MATCHLINE
(SEE SHEET 51)

MATCHLINE
(SEE SHEET 49)

Install 48-inch white, wet reflective, HPS-8 gore chevrons on 40' spacing.

Install dotted 6-inch white Type 1 tape across exit ramp taper (3' skip, 9' gap)

Install 48-inch white, wet reflective, HPS-8 gore chevrons on 40' spacing.



- Install 4, wet reflective, HPS-8 lane reduction arrows on approximate 375' spacing. Install the last arrow 660' in advance of the end of the lane drop taper. Last 3 arrows on next sheet. If possible, avoid pavement joints with minor spacing adjustments.
- Remove existing 6-inch skip line beyond the second arrow.
- Remove existing Type V lenses that do not conform to the new striping pattern. Do Not Disturb & leave castings in place.

PAVEMENT MARKING QUANTITIES		
DESCRIPTION	UNIT	QUANTITY
PAVE STRIPING-DUR TY 1-6 IN W	LF	60
PAVE MARKING-THERMO POLYMER MOD W CHEVRONS - WET REFLECTIVE (CONCRETE)	SQFT	1700
PAVE MARKING-THERMO POLYMER MOD W LANE REDUCTION ARROW - WET REFLECTIVE (CONCRETE)	SQFT	42

NO SCALE

I-264 PAVEMENT MARKINGS
Westbound Exit Ramp to I-64 East
MP 19.1



- Install 4, wet reflective, HPS-8 lane reduction arrows on approximate 375' spacing. Install the last arrow 660' in advance of the end of the lane drop taper. First arrow on previous sheet. If possible, avoid pavement joints with minor spacing adjustments.
- Remove existing 6-inch skip line beyond the second arrow.
- Remove existing Type V lenses that do not conform to the new striping pattern. Do Not Disturb & leave castings in place.

MATCHLINE
(SEE SHEET 52)

MATCHLINE
(SEE SHEET 50)

Install 48-inch white, wet reflective, HPS-8 gore chevrons on 40' spacing.

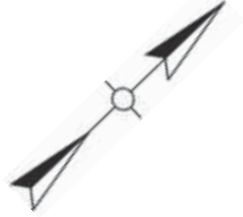


Install white, wet reflective, HPS-8 gore chevrons. KYTC to determine chevron sizes & spacing at the time of installation.

PAVEMENT MARKING QUANTITIES		
DESCRIPTION	UNIT	QUANTITY
REMOVE PAVEMENT MARKER TYPE V LENS	EACH	3
WATER BLASTING EXISTING STRIPE	LF	40
PAVE MARKING-THERMO POLYMER MOD W CHEVRONS - WET REFLECTIVE (CONCRETE)	SQFT	3000
PAVE MARKING-THERMO POLYMER MOD W LANE REDUCTION ARROW - WET REFLECTIVE (CONCRETE)	SQFT	126

NO SCALE

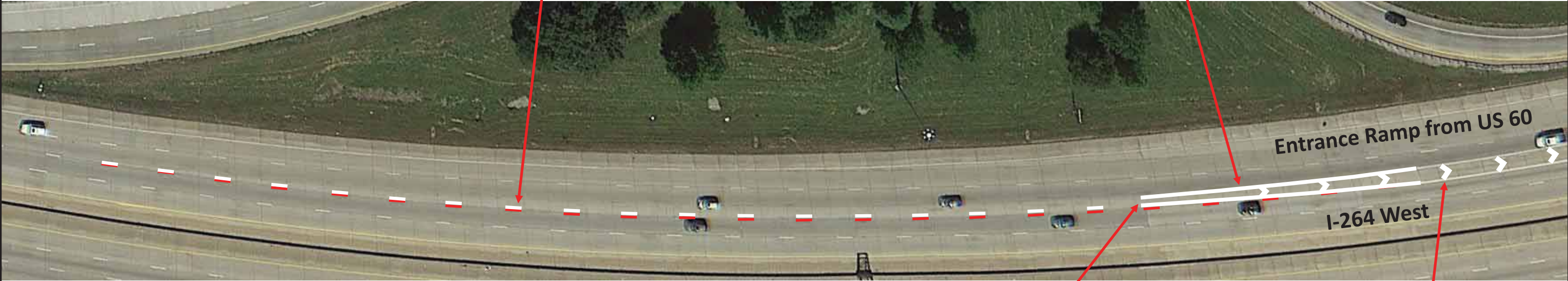
I-264 PAVEMENT MARKINGS
Westbound at I-64
MP 18.9



- Remove existing 6-inch white skip line starting at the end of the existing gore, extending approximately 950' to the west (approximately 23 skips).
- Install a new 6-inch white painted skip line starting at the end of the extended gore. Install two coats of paint for all new stripes.
- Remove existing Type V pavement marker lenses that do not conform to the new striping. Do Not Disturb & leave castings in place.
- Install new bi-directional white/red inlaid pavement markers along the new 6-inch white skip line.

- Extend existing 12" solid white painted gore stripes 200' max to the west. Install two coats of paint for all new stripes.
- Install new bi-directional white/red inlaid pavement markers along the 12-inch solid white gore stripes.

MATCHLINE
(SEE SHEET 51)



PAVEMENT MARKING QUANTITIES		
DESCRIPTION	UNIT	QUANTITY
REMOVE PAVEMENT MARKER TYPE V LENS	EACH	14
WATER BLASTING EXISTING STRIPE	LF	300
PAVE STRIPE PERM-6 IN HD21-WHITE	LF	400
PAVE STRIPE PERM-12 IN HD21-WHITE	LF	800
INLAID PAVEMENT MARKER W/R	EACH	30
PAVE MARKING-THERMO POLYMER MOD W CHEVRONS - WET REFLECTIVE (CONCRETE)	SQFT	300

- Lane 2 (right, mainline lane) – approximately 16' wide.
- Extended gore – approximately 4' wide.
- Lane 3 (left, CD Ramp lane) – approximately 13' wide.
- Actual lane widths and alignment to be determined by KYTC at time of installation.

Install white, wet reflective, HPS-8 gore chevrons. KYTC to determine chevron sizes & spacing at the time of installation.

NO SCALE

PAVEMENT MARKING QUANTITIES		
DESCRIPTION	UNIT	QUANTITY
PAVE STRIPING-DUR TY 1-6 IN W	LF	75
PAVE MARKING-THERMO POLYMER MOD W CHEVRONS - WET	SQFT	1300



NOTE: Aerial image may not reflect current pavement marking configuration.



Install 48-inch white, wet reflective, HPS-8 gore chevrons on 40' spacing.

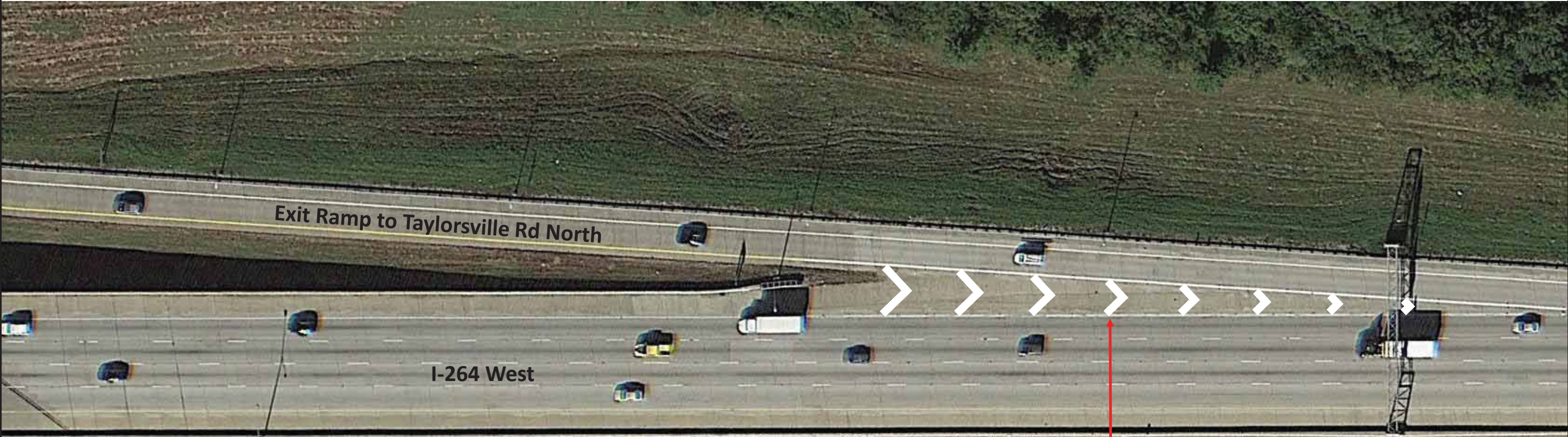
Install dotted 6-inch white Type 1 tape across exit ramp taper (3' skip, 9' gap)

Install 48-inch white, wet reflective, HPS-8 gore chevrons on 40' spacing.

NO SCALE

I-264 PAVEMENT MARKINGS
Westbound Exit Ramps at KY 1932
MP 18.0

PAVEMENT MARKING QUANTITIES		
DESCRIPTION	UNIT	QUANTITY
PAVE MARKING-THERMO POLYMER MOD W CHEVRONS - WET REFLECTIVE (CONCRETE)	SQFT	800



Install 48-inch white, wet reflective, HPS-8 gore chevrons on 40' spacing.

NO SCALE

PAVEMENT MARKING QUANTITIES		
DESCRIPTION	UNIT	QUANTITY
PAVE STRIPING-DUR TY 1-6 IN W	LF	80
PAVE MARKING-THERMO POLYMER MOD W CHEVRONS - WET REFLECTIVE (CONCRETE)	SQFT	725



Exit Ramp to Taylorsville Rd South

KY 155 – Taylorsville Rd

I-264 West

Install 48-inch white, wet reflective, HPS-8 gore chevrons on 40' spacing.

Install dotted 6-inch white Type 1 tape across exit ramp taper (3' skip, 9' gap)

NO SCALE

- Install 4, wet reflective, HPS-8 lane reduction arrows on approximate 300' spacing. Install the last arrow at the start of the lane ending taper. If possible, avoid pavement joints with minor spacing adjustments.
- Remove existing 6-inch skip line beyond the third arrow.
- Remove existing Type V lenses that do not conform to the new striping pattern. Do Not Disturb & leave castings in place.

- Install 6-inch dotted white Type 1 tape across the southbound Taylorsville Rd entrance taper (3' skip, 9' gap). Remove existing 6-inch white skip line.
- Remove any existing Type V lenses that do not conform to the new striping pattern. Do Not Disturb & leave castings in place.



- Shorten existing 12-inch white gore stripes by approximately 200'.
- Remove existing 6-inch skip line beyond the end of the gore.
- Install new 12-inch white dotted lane line starting at the end of the modified gore (3' skip, 9' gap). Install two coats of paint for all new stripes.
- Remove existing Type V lenses that do not conform to the new striping pattern. Do Not Disturb & leave castings in place.
- Install new bi-directional white/red inlaid pavement markers along the dotted lane line (24' spacing). Utilize existing markers when possible.

PAVEMENT MARKING QUANTITIES		
DESCRIPTION	UNIT	QUANTITY
PAVE STRIPING-DUR TY 1-6 IN W	LF	110
REMOVE PAVEMENT MARKER TYPE V LENS	EACH	28
WATER BLASTING EXISTING STRIPE	LF	550
PAVE STRIPE PERM-12 IN HD21-WHITE	LF	200
INLAID PAVEMENT MARKER W/R	EACH	16
PAVE MARKING-THERMO POLYMER MOD W LANE REDUCTION ARROW - WET REFLECTIVE (CONCRETE)	SQFT	168

NO SCALE

I-264 PAVEMENT MARKINGS
Westbound Entrance Ramp from KY 155
MP 16.7

COUNTY OF	ITEM NO.	SHEET NO.
JEFFERSON	5-938.00	58

PAVEMENT MARKING QUANTITIES		
DESCRIPTION	UNIT	QUANTITY
REMOVE PAVEMENT MARKER TYPE V LENS	EACH	16
WATER BLASTING EXISTING STRIPE	LF	350
PAVE STRIPE PERM-12 IN HD21-WHITE	LF	600
INLAID PAVEMENT MARKER W/R	EACH	48



MATCHLINE
(SEE SHEET 59)

MATCHLINE
(SEE SHEET 57)



- Remove existing 6-inch white skip line continuing from the entrance ramp gore from KY 155, heading west to US 31E.
- Install new painted 12-inch white dotted exit only stripe (3’ skip, 9’ gap). Install two coats of paint for all new stripes.
- Install new bi-directional white/red inlaid pavement markers along the dotted lane line (24’ spacing). Utilize existing markers when possible.
- Remove any existing Type V lenses that do not conform to the new striping pattern. Do Not Disturb & leave castings in place.

NO SCALE

I-264 PAVEMENT MARKINGS
Westbound between KY 155 & US 31E
MP 16.4

MATCHLINE
(SEE SHEET 60)

PAVEMENT MARKING QUANTITIES		
DESCRIPTION	UNIT	QUANTITY
REMOVE PAVEMENT MARKER TYPE V LENS	EACH	12
WATER BLASTING EXISTING STRIPE	LF	250
PAVE STRIPE PERM-12 IN HD21-WHITE	LF	800
INLAID PAVEMENT MARKER W/R	EACH	52

COUNTY OF	ITEM NO.	SHEET NO.
JEFFERSON	5-938.00	59



MATCHLINE
(SEE SHEET 58)



- Remove existing Type V pavement marker lenses that are in line with the existing 12-inch solid white exit only stripe. Do Not Disturb & leave castings in place.
- Refresh 12-inch solid exit only white stripe. Stripe over the old castings.
- Install new bi-directional white/red inlaid pavement markers along the 12-inch solid white.

- Remove existing 6-inch white skip line continuing from the entrance ramp gore from KY 155, heading west to US 31E.
- Install new painted 12-inch white dotted exit only stripe (3' skip, 9' gap). Install two coats of paint for all new stripes.
- Install new bi-directional white/red inlaid pavement markers along the dotted lane line (24' spacing). Utilize existing markers when possible.
- Remove any existing Type V lenses that do not conform to the new striping pattern. Do Not Disturb & leave castings in place.

NO SCALE

I-264 PAVEMENT MARKINGS
Westbound between KY 155 & US 31E
MP 16.2

PAVEMENT MARKING QUANTITIES		
DESCRIPTION	UNIT	QUANTITY
REMOVE PAVEMENT MARKER TYPE V LENS	EACH	22
WATER BLASTING EXISTING STRIPE	LF	325
PAVE STRIPE PERM-12 IN HD21-WHITE	LF	1550
INLAID PAVEMENT MARKER W/R	EACH	70
PAVE MARKING-THERMO POLYMER MOD W CHEVRONS - WET REFLECTIVE (CONCRETE)	SQFT	1000



MATCHLINE
(SEE SHEET 61)

- Re-align existing 12-inch solid white gore & exit only stripes for a smooth left transition for ramp reconfiguration. Verify new alignment with KYTC prior to striping.
- Remove segment of the existing stripes that don't conform to the new alignment.
- Remove existing Type V pavement marker lenses along the water blasted stripes. Do Not Disturb & leave castings in place.

MATCHLINE
(SEE SHEET 59)



Exit Ramp to Bardstown Rd

I-264 West

Install 48-inch white, wet reflective, HPS-8 gore chevrons on 40' spacing.

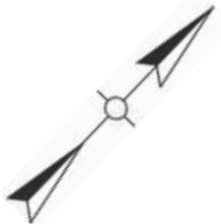
- Remove existing Type V pavement marker lenses that are in line with the existing 12-inch solid white exit only stripe. Do Not Disturb & leave castings in place.
- Install/refresh 12-inch solid exit only white stripe. Stripe over the old castings.
- Install new bi-directional white/red inlaid pavement markers along the 12-inch solid white.

NO SCALE

I-264 PAVEMENT MARKINGS
Westbound Exit Ramp to US 31E
MP 16.0

PAVEMENT MARKING QUANTITIES		
DESCRIPTION	UNIT	QUANTITY
PAVE STRIPING-DUR TY 1-6 IN W	LF	12
REMOVE PAVEMENT MARKING	SQFT	204
REMOVE PAVEMENT MARKER TYPE V LENS	EACH	30
WATER BLASTING EXISTING STRIPE	LF	250
PAVE STRIPE PERM-6 IN HD21-WHITE	LF	1700
PAVE STRIPE PERM-12 IN HD21-WHITE	LF	100
INLAID PAVEMENT MARKER W/R	EACH	40
PAVE MARKING-THERMO POLYMER MOD W 6-INCH CROSSWALK (CONCRETE)	SQFT	100
PAVE MARKING-THERMO POLYMER MOD W 24-INCH STOP BAR (CONCRETE)	SQFT	104
PAVE MARKING-THERMO POLYMER MOD W CURVE ARROW (CONCRETE)	SQFT	448

COUNTY OF	ITEM NO.	SHEET NO.
JEFFERSON	5-938.00	61



Remove existing markings & install 24-inch white HPS-8 stop bars and 6-inch white HPS-8 crosswalk stripes. Crosswalks to be 10' wide and stop bars a minimum of 6' in advance of the crosswalks. Remove any edge lines within the limits of the crosswalks.

Install 7 sets of HPS-8 curve arrows. Begin 40' back of the left turn stop bar, then on 80' spacing to the start of the solid white stripes.



MATCHLINE
(SEE SHEET 60)

Install 6-inch dotted white Type 1 tape dual left turn tracking between stop bar & crosswalk (2' skip, 6' gap).

- Remove existing Type V pavement marker lenses that are in line with the existing 6-inch solid white stripes. Do Not Disturb & leave castings in place.
- Refresh the existing 6-inch solid white left & right turn lane lines & extend approximately 40'. Stripe over for the old castings.
- Install new bi-directional white/red inlaid pavement markers along both 6-inch solid white stripes.

- Remove existing skip lines between the 12-inch solid white exit only stripe (previous sheet) and the start of the left & right turn solid white stripes.
- Install new 6-inch white skip lines (10 skip, 30' gap), with the left skip line paralleling the yellow edge line and the second (right) skip line beginning to allow for 12' minimum lanes. Verify alignments with KYTC prior to striping. Install two coats of paint for all new stripes.
- Remove existing Type V pavement marker lenses that do not conform to the new configuration. Do Not Disturb & leave castings in place.
- Install new bi-directional white/red inlaid pavement markers along both new skip lines.

NO SCALE

I-264 PAVEMENT MARKINGS
Westbound Exit Ramp to US 31E
MP 15.8

MATCHLINE
(SEE SHEET 63)

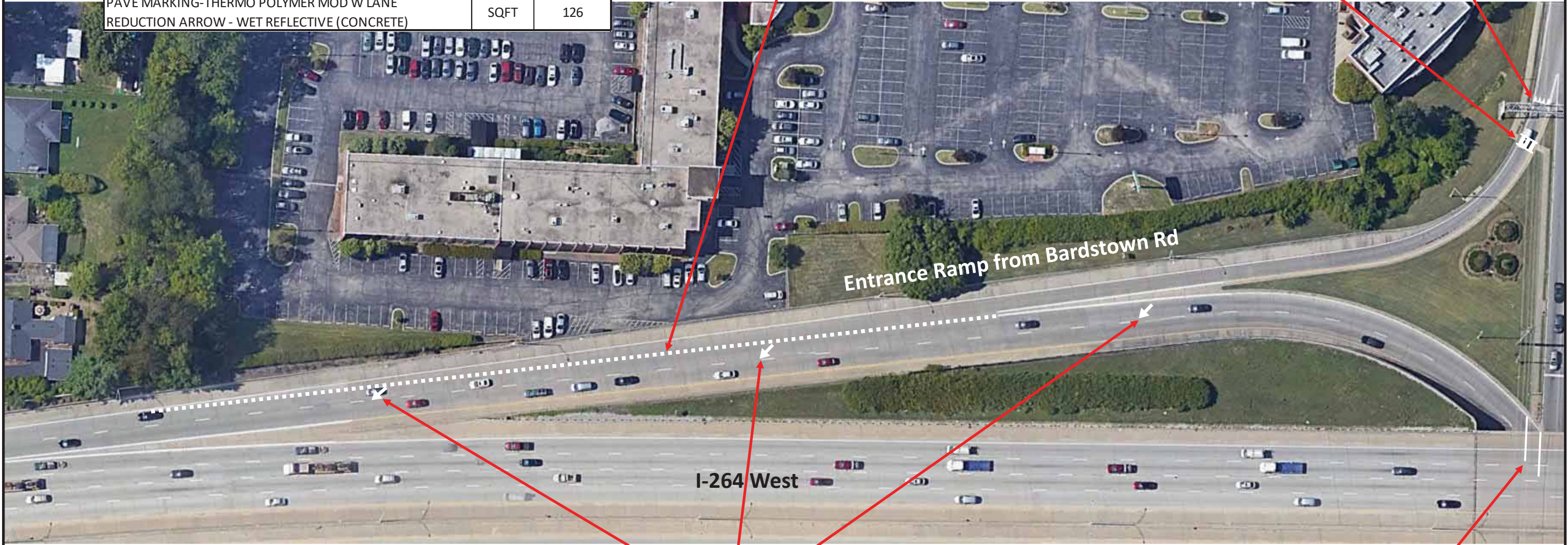
COUNTY OF	ITEM NO.	SHEET NO.
JEFFERSON	5-938.00	62

PAVEMENT MARKING QUANTITIES		
DESCRIPTION	UNIT	QUANTITY
PAVE STRIPING-DUR TY 1-6 IN W	LF	160
WATER BLASTING EXISTING STRIPE	LF	60
PAVE MARKING-THERMO POLYMER MOD W 6-INCH CROSSWALK (CONCRETE)	SQFT	60
PAVE MARKING-THERMO POLYMER MOD W 24-INCH CROSSWALK (CONCRETE)	SQFT	160
PAVE MARKING-THERMO POLYMER MOD W 36-INCH YIELD BAR (CONCRETE)	SQFT	15
PAVE MARKING-THERMO POLYMER MOD W LANE REDUCTION ARROW - WET REFLECTIVE (CONCRETE)	SQFT	126

Install dotted 6-inch white Type 1 tape across the entrance ramp taper from Southbound Bardstown Rd (3' skip, 9' gap).

Install 6-inch white HPS-8 crosswalk stripes and 24-inch white HPS-8 bars with 24-inch gaps. Install bars parallel with the flow of traffic. Crosswalks to be minimum 10' wide and include the full width of the sidewalk ramp. Remove any edge lines within the limits of the crosswalk.

Install 36" x 24" HPS-8 yield triangles approximately 30' in advance of crosswalk on US 31E South Ramp to I-264 West.



Entrance Ramp from Bardstown Rd

I-264 West

Install 4, wet reflective, HPS-8 lane reduction arrows on approximate 300' spacing. Install the last arrow (next sheet) at the start of the lane ending taper. If possible, avoid pavement joints with minor spacing adjustments.

Remove existing markings & install 6-inch white HPS-8 crosswalk stripes. Remove edge lines within the limits of the crosswalk.



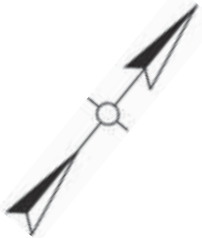
NO SCALE

I-264 PAVEMENT MARKINGS
Westbound Entrance Ramp from US 31E
MP 15.6

COUNTY OF	ITEM NO.	SHEET NO.
JEFFERSON	5-938.00	63

MATCHLINE
(SEE SHEET 64)

PAVEMENT MARKING QUANTITIES		
DESCRIPTION	UNIT	QUANTITY
PAVE MARKING-THERMO POLYMER MOD W LANE REDUCTION ARROW - WET REFLECTIVE (CONCRETE)	SQFT	84



MATCHLINE
(SEE SHEET 62)



I-264 West

Entrance Ramp from Bardstown Rd

Install 4, wet reflective, HPS-8 lane reduction arrows on approximate 375' spacing. Install the last arrow 100' in advance (east of) the overhead sign truss. Last 3 arrows on next sheet. If possible, avoid pavement joints with minor spacing adjustments.

Install 4, wet reflective, HPS-8 lane reduction arrows on approximate 300' spacing. Install the last arrow at the start of the lane ending taper. First 3 arrows on previous sheet. If possible, avoid pavement joints with minor spacing adjustments.

NO SCALE

I-264 PAVEMENT MARKINGS
Westbound Entrance Ramp from US 31E
MP 15.4

PAVEMENT MARKING QUANTITIES		
DESCRIPTION	UNIT	QUANTITY
REMOVE PAVEMENT MARKER TYPE V LENS	EACH	3
WATER BLASTING EXISTING STRIPE	LF	75
PAVE MARKING-THERMO POLYMER MOD W LANE REDUCTION ARROW - WET REFLECTIVE (CONCRETE)	SQFT	126

- Remove existing 6-inch skip line beyond the second lane reduction arrow (approximately 6 skips).
- Remove all existing Type V lenses beyond the second lane reduction arrow. Do Not Disturb & leave castings in place.



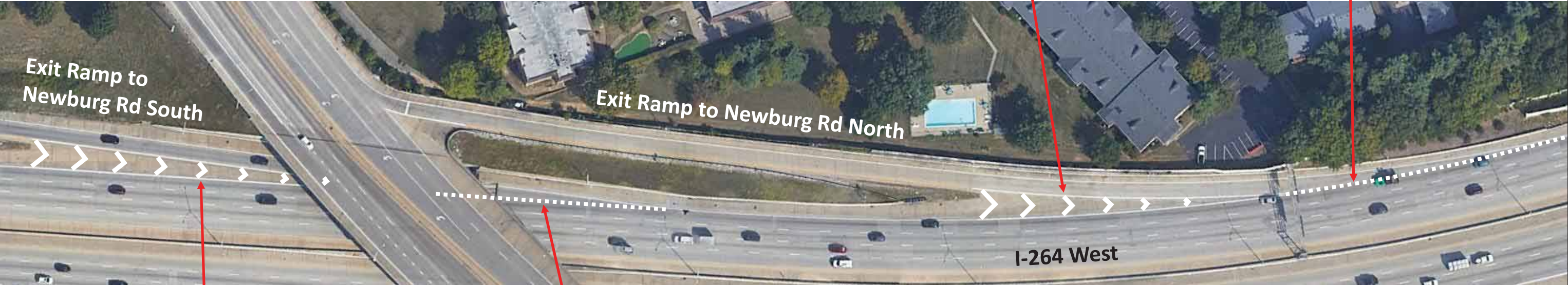
MATCHLINE
(SEE SHEET 63)



Install 4, wet reflective, HPS-8 lane reduction arrows on approximate 375' spacing. Install the last arrow 100' in advance (east of) the overhead sign truss. First arrow on previous sheet. If possible, avoid pavement joints with minor spacing adjustments.

NO SCALE

PAVEMENT MARKING QUANTITIES		
DESCRIPTION	UNIT	QUANTITY
PAVE STRIPING-DUR TY 1-6 IN W	LF	140
PAVE MARKING-THERMO POLYMER MOD W CHEVRONS - WET REFLECTIVE (CONCRETE)	SQFT	1150



Install 48-inch white, wet reflective, HPS-8 gore chevrons on 40' spacing.

Install dotted 6-inch white Type 1 tape across exit ramp taper (3' skip, 9' gap)

Install 48-inch white, wet reflective, HPS-8 gore chevrons on 40' spacing.

Install dotted 6-inch white Type 1 tape across exit ramp taper (3' skip, 9' gap)

NO SCALE

Install 36" x 24" HPS-8 yield triangles at the existing yield sign on KY 1703 South Ramp to I-264 West.



PAVEMENT MARKING QUANTITIES		
DESCRIPTION	UNIT	QUANTITY
PAVE MARKING-THERMO POLYMER MOD W 36-INCH YIELD BAR (CONCRETE)	SQFT	18
PAVE MARKING-THERMO POLYMER MOD W LANE REDUCTION ARROW - WET REFLECTIVE (CONCRETE)	SQFT	84

Install 2, wet reflective, HPS-8 lane reduction arrows on approximate 175' spacing. Install the last arrow at the last skip. If possible, avoid pavement joints with minor spacing adjustments.



MATCHLINE
(SEE SHEET 67)

I-264 West

Entrance Ramp from Newburg Rd

NO SCALE

I-264 PAVEMENT MARKINGS
Westbound Entrance Ramp from KY 1703
MP 14.3

PAVEMENT MARKING QUANTITIES		
DESCRIPTION	UNIT	QUANTITY
REMOVE PAVEMENT MARKER TYPE V LENS	EACH	10
WATER BLASTING EXISTING STRIPE	LF	200
PAVE STRIPE PERM-6 IN HD21-WHITE	LF	250
INLAID PAVEMENT MARKER W/R	EACH	18



MATCHLINE
(SEE SHEET 66)



- Install approximately 400' of 6-inch dotted white starting at the end of the gore entrance ramp gore (3' skip, 9' gap). Install two coats of paint for all new stripes.
- Remove existing 6-inch white skip line beyond gore.
- Install new bi-directional white/red inlaid pavement markers along dotted lane line (24' spacing). Utilize existing markers when possible.
- Remove any existing Type V lenses that do not conform to the new striping pattern. Do Not Disturb & leave castings in place.

NO SCALE

I-264 PAVEMENT MARKINGS
Westbound Entrance Ramp from KY 1703
MP 14.1

PAVEMENT MARKING QUANTITIES		
DESCRIPTION	UNIT	QUANTITY
PAVE STRIPING-DUR TY 1-6 IN W	LF	75
PAVEMENT MARKING-THERMO LETTERS (CONCRETE)	EACH	2
PAVE MARKING-THERMO ELONG ROUTE SHIELD (CONCRETE)	EACH	1
PAVE MARKING-THERMO POLYMER MOD W CHEVRONS - WET REFLECTIVE (CONCRETE)	SQFT	775



Install 48-inch white, wet reflective, HPS-8 gore chevrons on 40' spacing.



Exit Ramp to Poplar Level Rd

I-264 West

Install I-65 thermo elongated route shield in the right lane at the exit ramp gore crash cushion to Poplar Level Rd. Install thermo "TO" approximately 40' in advance of the I-65 shield. Adjust location as necessary to avoid damaged pavement and joints.

Install dotted 6-inch white Type 1 tape across exit ramp taper (3' skip, 9' gap)

NO SCALE

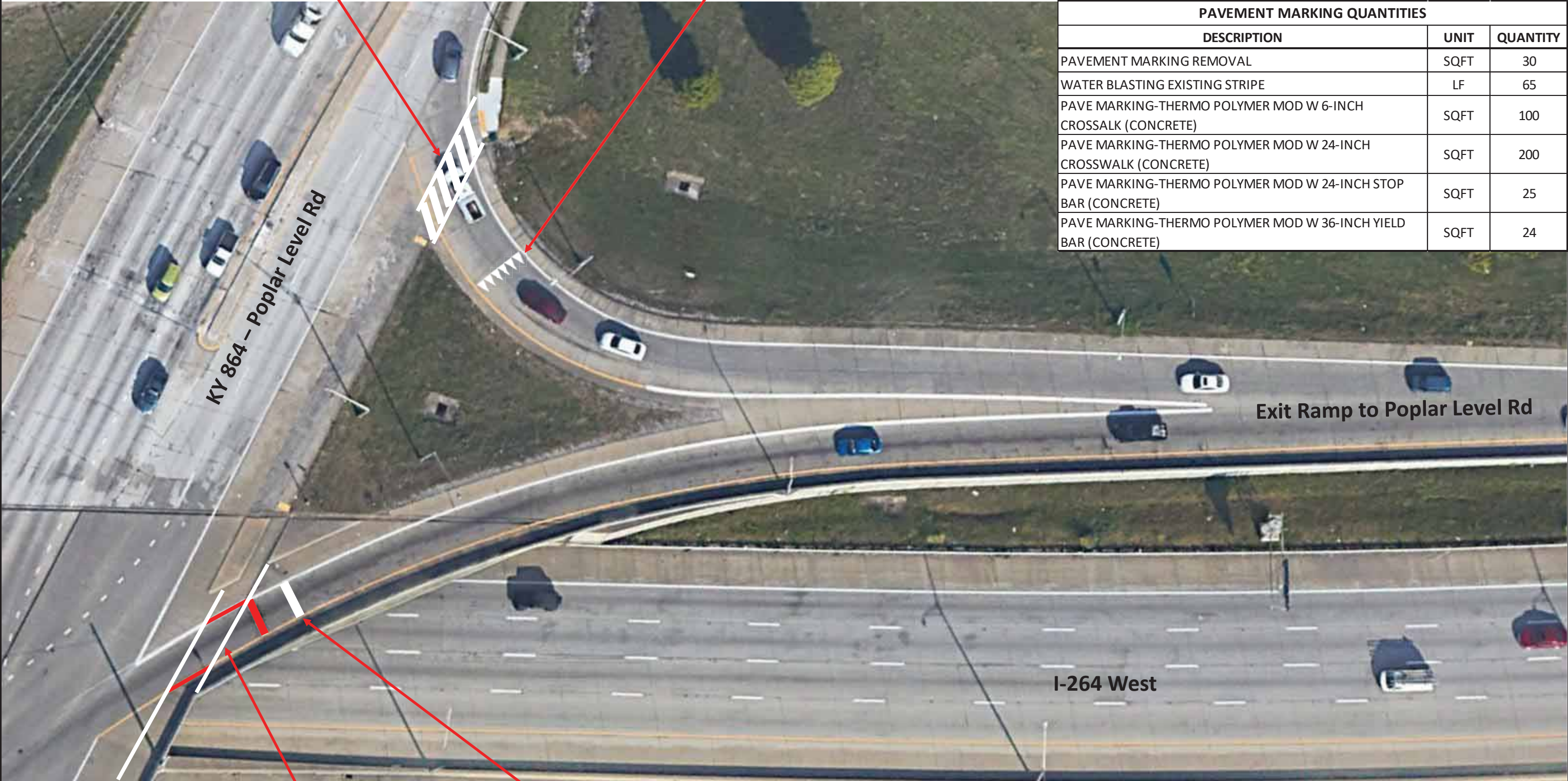
I-264 PAVEMENT MARKINGS
Westbound Exit Ramp to KY 864
MP 13.6



Install 6-inch white HPS-8 crosswalk stripes and 24-inch white HPS-8 bars with 24-inch gaps. Install bars parallel with the flow of traffic. Crosswalks to be minimum 10' wide and include the full width of the sidewalk ramp. Remove any edge lines within the limits of the crosswalk.

Install 36" x 24" HPS-8 yield triangles approximately 10' in advance of the crosswalk.

PAVEMENT MARKING QUANTITIES		
DESCRIPTION	UNIT	QUANTITY
PAVEMENT MARKING REMOVAL	SQFT	30
WATER BLASTING EXISTING STRIPE	LF	65
PAVE MARKING-THERMO POLYMER MOD W 6-INCH CROSSALK (CONCRETE)	SQFT	100
PAVE MARKING-THERMO POLYMER MOD W 24-INCH CROSSWALK (CONCRETE)	SQFT	200
PAVE MARKING-THERMO POLYMER MOD W 24-INCH STOP BAR (CONCRETE)	SQFT	25
PAVE MARKING-THERMO POLYMER MOD W 36-INCH YIELD BAR (CONCRETE)	SQFT	24



Install 6-inch white HPS-8 crosswalk stripes. Crosswalks to be 10' wide. Remove any edge lines within the limits of the crosswalks.

Remove existing stop bar. Install new 24-inch white HPS-8 stop bar a minimum of 6' in advance of crosswalk.

NO SCALE

I-264 PAVEMENT MARKINGS
Westbound Exit Ramp to KY 864
MP 13.45

Install 4, wet reflective, HPS-8 lane reduction arrows on approximate 300' spacing. Install the last arrow at the last existing skip. Last 3 arrows on next sheet. If possible, avoid pavement joints with minor spacing adjustments.

Install dotted 6-inch white Type 1 tape across the entrance ramp taper from Southbound Poplar Level Rd (3' skip, 9' gap).

Install 6-inch white HPS-8 crosswalk stripes and 24-inch white HPS-8 bars with 24-inch gaps. Install bars parallel with the flow of traffic. Crosswalks to be minimum 10' wide and include the full width of the sidewalk ramp. Remove any edge lines within the limits of the crosswalk.



MATCHLINE
(SEE SHEET 71)

PAVEMENT MARKING QUANTITIES		
DESCRIPTION	UNIT	QUANTITY
PAVE STRIPING-DUR TY 1-6 IN W	LF	110
WATER BLASTING EXISTING STRIPE	LF	60
PAVEMENT MARKING-THERMO LETTERS (CONCRETE)	EACH	2
PAVE MARKING-THERMO ELONG ROUTE SHIELD (CONCRETE)	EACH	1
PAVE MARKING-THERMO POLYMER MOD W 6-INCH CROSSWALK (CONCRETE)	SQFT	110
PAVE MARKING-THERMO POLYMER MOD W 24-INCH CROSSWALK (CONCRETE)	SQFT	300
PAVE MARKING-THERMO POLYMER MOD W LANE REDUCTION ARROW - WET REFLECTIVE (CONCRETE)	SQFT	42

Install I-65 thermo elongated route shield in the right lane approximately 450' in advance (east) of the entrance ramp gore from Poplar Level Rd. Install thermo "TO" approximately 40' in advance of the I-65 shield. Adjust location as necessary to avoid damaged pavement and joints.



Install 6-inch white HPS-8 crosswalk stripes. Crosswalks to be 10' wide. Remove any striping within the limits of the crosswalks.

I-264 PAVEMENT MARKINGS
Westbound Entrance Ramp from KY 864
MP 13.3

NOTE: Work shown on this sheet falls within the limits of an active concrete rehabilitation project. These work items will need to be coordinated with the rehab project and could be delayed or omitted from the contract.

COUNTY OF	ITEM NO.	SHEET NO.
JEFFERSON	5-938.00	71

PAVEMENT MARKING QUANTITIES		
DESCRIPTION	UNIT	QUANTITY
REMOVE PAVEMENT MARKER TYPE V LENS	EACH	22
WATER BLASTING EXISTING STRIPE	LF	450
PAVEMENT MARKING-THERMO LETTERS (CONCRETE)	EACH	12
PAVE STRIPE PERM-12 IN HD21-WHITE	LF	650
INLAID PAVEMENT MARKER W/R	EACH	54
PAVE MARKING-THERMO ELONG ROUTE SHIELD (CONCRETE)	EACH	3
PAVE MARKING-THERMO POLYMER MOD W LANE REDUCTION ARROW - WET REFLECTIVE (CONCRETE)	SQFT	126



MATCHLINE
(SEE SHEET 72)

MATCHLINE
(SEE SHEET 70)

Install KY 61 thermo elongated route shield in the right lane approximately 100' beyond the "NORTH" shield. Adjust location as necessary to avoid damaged pavement and joints.

Install I-65 thermo elongated route shields in the right two lanes approximately 250' beyond (west) of the overhead sign truss. Install thermo "NORTH" approximately 40' beyond the right I-65 shield in the exit only lane. Install thermo "SOUTH" approximately 40' beyond the left I-65 shield. Adjust location as necessary to avoid damaged pavement and joints.

Install 4, wet reflective, HPS-8 lane reduction arrows on approximate 300' spacing. Install the last arrow at the last existing skip. First arrow on previous sheet. If possible, avoid pavement joints with minor spacing adjustments.



Install thermo "TO" approximately 40' in advance of the I-65 South shield. Adjust location as necessary to avoid damaged pavement and joints.

- Remove existing 6-inch white skip line continuing from the entrance ramp gore from KY 864, heading west to I-65.
- Install new painted 12-inch white dotted exit only stripe (3' skip, 9' gap). Install two coats of paint for all new stripes.
- Install new bi-directional white/red inlaid pavement markers along the dotted lane line (24' spacing). Utilize existing markers when possible. Do Not Install markers on bridge decks.
- Remove any existing Type V lenses that do not conform to the new striping pattern. Do Not Disturb & leave castings in place.

- Remove existing 6-inch white skip line beyond the third lane reduction arrow.
- Remove existing Type V lenses beyond the third lane reduction arrow. Do Not Disturb & leave castings in place.

NO SCALE

I-264 PAVEMENT MARKINGS
Westbound Entrance Ramp from KY 864
MP 13.1

NOTE: Work shown on this sheet falls within the limits of an active concrete rehabilitation project. These work items will need to be coordinated with the rehab project and could be delayed or omitted from the contract.

COUNTY OF	ITEM NO.	SHEET NO.
JEFFERSON	5-938.00	72



MATCHLINE
(SEE SHEET 73)

Install 48-inch white, wet reflective, HPS-8 gore chevrons on 40' spacing.

- Remove existing Type V pavement marker lenses that are in line with the existing 12-inch solid white exit only stripe. Do Not Disturb & leave castings in place.
- Refresh 12-inch solid exit only white stripe. Stripe over the old castings.
- Install new bi-directional white/red inlaid pavement markers along the 12-inch solid white.

- Remove existing 6-inch white skip line continuing from the entrance ramp gore from KY 864, heading west to I-65.
- Install new painted 12-inch white dotted exit only stripe (3' skip, 9' gap). Install two coats of paint for all new stripes.
- Install new bi-directional white/red inlaid pavement markers along the dotted lane line (24' spacing). Utilize existing markers when possible. Do Not Install markers on bridge decks.
- Remove any existing Type V lenses that do not conform to the new striping pattern. Do Not Disturb & leave castings in place.

MATCHLINE
(SEE SHEET 71)



- Remove existing 6-inch white skip line starting next to the tip of the I-65 exit gore, heading west to the Crittenden Dr/Airport/Fair/Expo Ctr exit.
- Install new painted 12-inch white dotted exit only stripe (3' skip, 9' gap). Install two coats of paint for all new stripes.
- Install new bi-directional white/red inlaid pavement markers along the dotted lane line (24' spacing). Utilize existing markers when possible. Do Not Install markers on bridge decks.
- Remove any existing Type V lenses that do not conform to the new striping pattern. Do Not Disturb & leave castings in place.

PAVEMENT MARKING QUANTITIES		
DESCRIPTION	UNIT	QUANTITY
REMOVE PAVEMENT MARKER TYPE V LENS	EACH	26
WATER BLASTING EXISTING STRIPE	LF	250
PAVE STRIPE PERM-12 IN HD21-WHITE	LF	1800
INLAID PAVEMENT MARKER W/R	EACH	92
PAVE MARKING-THERMO POLYMER MOD W CHEVRONS - WET REFLECTIVE (CONCRETE)	SQFT	1075

NO SCALE

I-264 PAVEMENT MARKINGS
Westbound Exit Ramp to I-65/KY 61
MP 12.7

NOTE: Work shown on this sheet falls within the limits of an active concrete rehabilitation project. These work items will need to be coordinated with the rehab project and could be delayed or omitted from the contract.

COUNTY OF	ITEM NO.	SHEET NO.
JEFFERSON	5-938.00	73

PAVEMENT MARKING QUANTITIES		
DESCRIPTION	UNIT	QUANTITY
REMOVE PAVEMENT MARKER TYPE V LENS	EACH	24
WATER BLASTING EXISTING STRIPE	LF	150
PAVE STRIPE PERM-12 IN HD21-WHITE	LF	1600
INLAID PAVEMENT MARKER W/R	EACH	85
PAVE MARKING-THERMO POLYMER MOD W CHEVRONS - WET REFLECTIVE (CONCRETE)	SQFT	2000



MATCHLINE
(SEE SHEET 72)

Install 48-inch white, wet reflective, HPS-8 gore chevrons on 40' spacing.

Install 48-inch white, wet reflective, HPS-8 gore chevrons on 40' spacing.



Install 48-inch white, wet reflective, HPS-8 gore chevrons on 40' spacing.

- Remove existing Type V pavement marker lenses that are in line with the existing 12-inch solid white exit only stripe. Do Not Disturb & leave castings in place.
- Refresh 12-inch solid exit only white stripe. Stripe over the old castings.
- Install new bi-directional white/red inlaid pavement markers along the 12-inch solid white.

- Remove existing 6-inch white skip line continuing across from the tip of the I-65 exit gore, heading west to the Crittenden Dr/Airport/Fair/Expo Ctr exit.
- Install new painted 12-inch white dotted exit only stripe (3' skip, 9' gap). Install two coats of paint for all new stripes.
- Install new bi-directional white/red inlaid pavement markers along the dotted lane line (24' spacing). Utilize existing markers when possible. Do Not Install markers on bridge decks.
- Remove any existing Type V lenses that do not conform to the new striping pattern. Do Not Disturb & leave castings in place.

NO SCALE

I-264 PAVEMENT MARKINGS
Westbound Exit Ramps to I-65/KY 61/KY 1631
MP 12.4



Install 6-inch white HPS-8 crosswalk stripes and 24-inch white HPS-8 bars with 24-inch gaps. Install bars parallel with the flow of traffic. Crosswalks to be minimum 10' wide and include the full width of the sidewalk ramp. Remove any edge lines within the limits of the crosswalk.

Remove existing yield bar. Install new 36" x 24" white HPS-8 yield triangles approximately 10' in advance of the crosswalk.



Remove existing stop bar. Install new 24-inch white HPS-8 stop bar a minimum of 6' in advance of crosswalk.

Install 6-inch white HPS-8 crosswalk stripes. Crosswalks to be 10' wide. Remove any edge lines within the limits of the crosswalks.

PAVEMENT MARKING QUANTITIES		
DESCRIPTION	UNIT	QUANTITY
PAVEMENT MARKING REMOVAL	SQFT	50
WATER BLASTING EXISTING STRIPE	LF	60
PAVE MARKING-THERMO POLYMER MOD W 6-INCH CROSSWALK (CONCRETE)	SQFT	50
PAVE MARKING-THERMO POLYMER MOD W 24-INCH CROSSWALK (CONCRETE)	SQFT	200
PAVE MARKING-THERMO POLYMER MOD W 24-INCH STOP BAR (CONCRETE)	SQFT	32
PAVE MARKING-THERMO POLYMER MOD W 36-INCH YIELD BAR (CONCRETE)	SQFT	15

NO SCALE

I-264 PAVEMENT MARKINGS
Westbound Exit Ramp to KY 61
MP 12.25



Install dotted 6-inch white Type 1 tape
across exit ramp taper (3' skip, 9' gap).

Install 48-inch white, wet reflective,
HPS-8 gore chevrons on 40' spacing.



PAVEMENT MARKING QUANTITIES		
DESCRIPTION	UNIT	QUANTITY
PAVE STRIPING-DUR TY 1-6 IN W	LF	50
PAVE MARKING-THERMO POLYMER MOD W CHEVRONS - WET REFLECTIVE (CONCRETE)	SQFT	980

NO SCALE

I-264 PAVEMENT MARKINGS
I-64 East Ramp to I-264
I-64 MP 11.9



Install 48-inch white, wet reflective,
HPS-8 gore chevrons on 40' spacing.



PAVEMENT MARKING QUANTITIES		
DESCRIPTION	UNIT	QUANTITY
PAVE MARKING-THERMO POLYMER MOD W CHEVRONS - WET REFLECTIVE (CONCRETE)	SQFT	850

NO SCALE

I-264 PAVEMENT MARKINGS
I-64 East Ramps to I-264
I-64 MP 12.1

PAVEMENT MARKING QUANTITIES		
DESCRIPTION	UNIT	QUANTITY
REMOVE PAVEMENT MARKER TYPE V LENS	EACH	6
PAVE STRIPE PERM-12 IN HD21-WHITE	LF	300
INLAID PAVEMENT MARKER W/R	EACH	22
PAVE MARKING-THERMO POLYMER MOD W CHEVRON	SQFT	100



- Extend 12-inch solid white painted gore stripe approximately 50' over the existing dotted lane line. Stripe over any old pavement marker castings. Install two coats of paint for all new stripes.
- Remove existing Type V pavement marker lenses that are in line with the proposed 12-inch solid white gore stripe. Do Not Disturb & leave castings in place.
- Install new bi-directional white/red inlaid pavement markers along the 12-inch solid white.

Install 24-inch white, wet reflective, HPS-8 gore chevrons on 20' spacing.



Install new bi-directional white/red inlaid pavement markers along the existing 12-inch dotted white lane line as necessary (24' spacing). Do Not Install markers on bridge decks.

- Extend 12-inch solid white painted gore stripe approximately 80' over the existing dotted lane line. Stripe over any old pavement marker castings. Install two coats of paint for all new stripes.
- Remove existing Type V pavement marker lenses that are in line with the proposed 12-inch solid white gore stripe. Do Not Disturb & leave castings in place.
- Install new bi-directional white/red inlaid pavement markers along the 12-inch solid white.

NO SCALE

I-264 PAVEMENT MARKINGS
I-64 East CD Ramps at I-264 East & West
I-64 MP 12.4



- Shorten existing 12-inch white gore stripes by approximately 230'.
- Extend existing 6-inch white skip line west to the end of the modified gore.
- Remove existing Type V lenses that do not conform to the new striping pattern. Do Not Disturb & leave castings in place.
- Install new bi-directional white/red inlaid pavement markers along the new skip line. Utilize existing markers when possible.

Install white, wet reflective, HPS-8 gore chevrons. KYTC to determine chevron sizes & spacing at the time of installation.

- Remove existing 6-inch skip line beyond the second lane reduction arrow.
- Remove all existing Type V lenses where the skip line has been removed. Do Not Disturb & leave castings in place.



Install 4, wet reflective, HPS-8 lane reduction arrows on approximate 375' spacing. Install the last (eastern most) arrow at the start of the lane ending taper. If possible, avoid pavement joints with minor spacing adjustments.

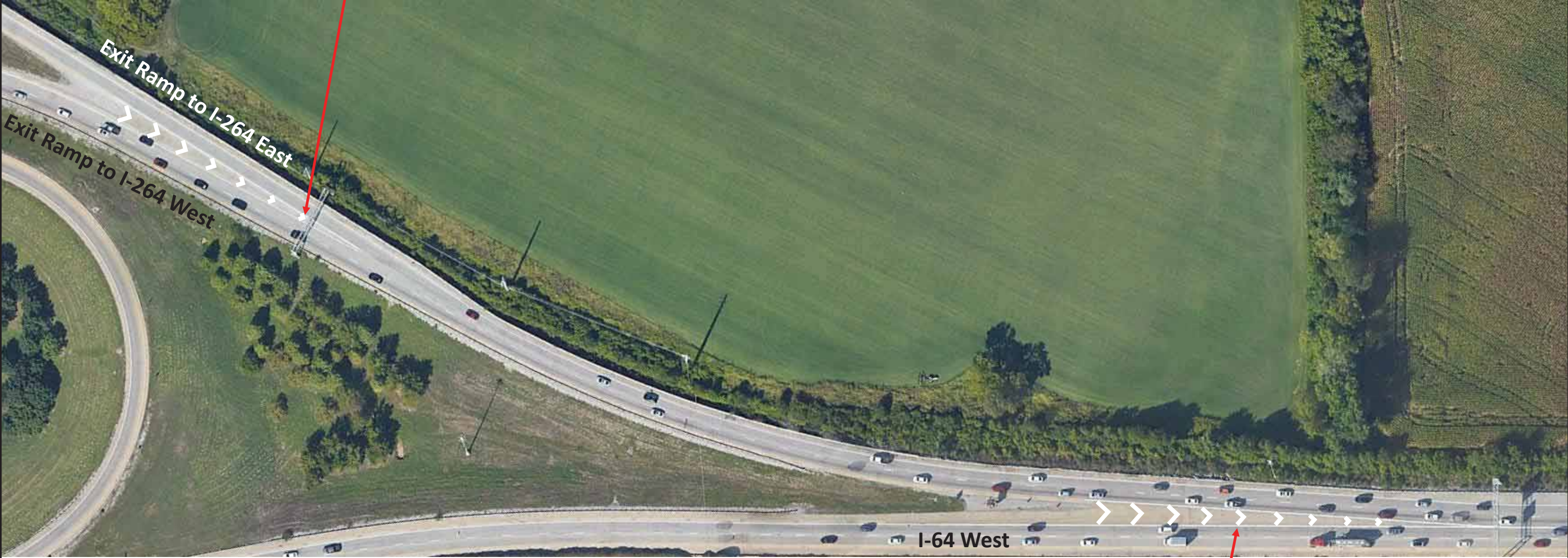
PAVEMENT MARKING QUANTITIES		
DESCRIPTION	UNIT	QUANTITY
REMOVE PAVEMENT MARKER TYPE V LENS	EACH	25
WATER BLASTING EXISTING STRIPE	LF	700
INLAID PAVEMENT MARKER W/R	EACH	4
PAVE MARKING-THERMO POLYMER MOD W CHEVRONS - WET REFLECTIVE (CONCRETE)	SQFT	2300
PAVE MARKING-THERMO POLYMER MOD W LANE REDUCTION ARROW - WET REFLECTIVE (CONCRETE)	SQFT	168

NO SCALE

I-264 PAVEMENT MARKINGS
I-264 East Ramp to I-64 East
I-64 MP 12.8



Install 48-inch white, wet reflective, HPS-8 gore chevrons on 40' spacing.



PAVEMENT MARKING QUANTITIES		
DESCRIPTION	UNIT	QUANTITY
PAVE MARKING-THERMO POLYMER MOD W CHEVRON	SQFT	1400

Install 48-inch white, wet reflective, HPS-8 gore chevrons on 40' spacing.

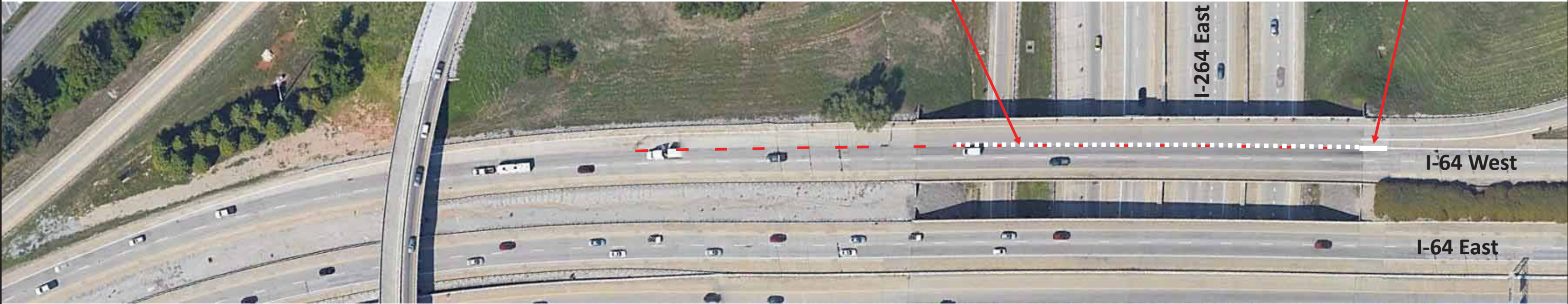
NO SCALE

I-264 PAVEMENT MARKINGS
I-64 West Ramps to I-264
I-64 MP 12.6



- Install approximately 400' of 6-inch dotted white starting at the end of the gore (3' skip, 9' gap). Install two coats of paint for all new stripes.
- Remove existing 6-inch white skip line beyond gore.
- Remove any existing Type V lenses that do not conform to the new striping pattern. Do Not Disturb & leave castings in place.

Extend painted mainline 12-inch solid white gore stripe to match the ramp gore stripe. Install two coats of paint for all new stripes.



PAVEMENT MARKING QUANTITIES		
DESCRIPTION	UNIT	QUANTITY
REMOVE PAVEMENT MARKER TYPE V LENS	EACH	5
WATER BLASTING EXISTING STRIPE	LF	200
PAVE STRIPE PERM-6 IN HD21-WHITE	LF	250
PAVE STRIPE PERM-12 IN HD21-WHITE	LF	60

NO SCALE

I-264 PAVEMENT MARKINGS
I-264 East Ramp to I-64 West
I-64 MP 12.2



- Install new 6-inch solid white painted 660' edge line taper. Verify new alignment with KYTC prior to striping. Install two coats of paint for all new stripes.
- Remove existing white edge line within limits of proposed edge line taper. Verify removal limits with KYTC prior to beginning work.

- Shorten existing 12-inch white gore stripes by approximately 120'.
- Remove existing Type V lenses that do not conform to the new striping pattern. Do Not Disturb & leave castings in place.



- Install dotted 6-inch white Type 1 tape across entrance ramp taper (3' skip, 9' gap).
- Remove existing 6-inch white skip line beyond gore.
- Remove any existing Type V lenses that do not conform to the new striping pattern. Do Not Disturb & leave castings in place.

PAVEMENT MARKING QUANTITIES		
DESCRIPTION	UNIT	QUANTITY
PAVE STRIPING-DUR TY 1-6 IN W	LF	220
REMOVE PAVEMENT MARKER TYPE V LENS	EACH	12
WATER BLASTING EXISTING STRIPE	LF	1000
PAVE STRIPE PERM-6 IN HD21-WHITE	LF	1400

NO SCALE

I-264 PAVEMENT MARKINGS
I-264 West Ramp to I-64 West
I-64 MP 11.9



Install 48-inch white, wet reflective, HPS-8 gore chevrons on 40' spacing.

- Install 12-inch dotted white HPS-8 thru the exit only lane taper (3' skip, 9' gap).
- Refresh existing 12-inch dotted white with HPS-8 striping.



PAVEMENT MARKING QUANTITIES		
DESCRIPTION	UNIT	QUANTITY
PAVE MARKING-DOTTED LANE EXTEN (THERMO POLYMER MOD-12 IN W ASPHALT)	LF	350
PAVE MARKING-THERMO POLYMER MOD W CHEVRONS - WET REFLECTIVE (ASPHALT)	SQFT	450

NO SCALE

I-264 PAVEMENT MARKINGS
I-71 South Ramp to I-264 West
I-71 MP 5.3



Install 1.5-inch white continuous guardrail delineation from the bridge over I-71 North to the end of the run.

Install 6-inch white continuous barrier wall delineation on the bridge over I-71 North. Install barrier wall delineation at a consistent height above the roadway, as close to the top of the barrier wall as possible.

Install 1.5-inch white continuous guardrail delineation from the end treatment to the bridge over I-71 North.



PAVEMENT MARKING QUANTITIES		
DESCRIPTION	UNIT	QUANTITY
LINEAR DELINEATION PANELS-6 IN W	LF	110
LINEAR DELINEATION PANELS-1.5 IN W	LF	1100

NO SCALE

I-264 PAVEMENT MARKINGS
I-71 South Ramp to I-264 West
I-71 MP 5.1

PAVEMENT MARKING QUANTITIES		
DESCRIPTION	UNIT	QUANTITY
WATER BLASTING EXISTING STRIPE	LF	100
PAVE STRIPING-THERMO POLYMER MOD-6 IN W (ASPHALT)	LF	250
PAVE MARKING-THERMO POLYMER MOD W CHEVRONS - WET REFLECTIVE (ASPHALT)	SQFT	450



Install 48-inch white, wet reflective, HPS-8 gore chevrons on 40' spacing.



- Remove existing 6-inch white skip line approaching 12-inch solid white exit only stripe.
- Install new HPS-8, 6-inch white dotted starting at exit only lane taper to the existing 12-inch solid (3' skip, 9' gap).
- Utilize existing castings when possible.

NO SCALE

I-264 PAVEMENT MARKINGS
I-71 North Ramp to I-264 West
I-71 MP 4.9